

Gold Coast Light Rail Stage 4 (Burleigh Heads to Coolangatta)

Burleigh Heads to Tugun section
Concept design





LEGEND



Light Rail Stage 3



Light Rail Stage 4
Proposed light rail station locations*



Light Rail Stage 4
Completed Corridor Study
(Burleigh Heads to Tugun)



Light Rail Stage 4
Current Corridor Study
(Tugun to Coolangatta)



Key roads



Key M1 upgrade features
Upgraded overpass at Nineteenth
Avenue, new M1 service road between
Tallebudgera and KP McGrath Drive,
and new off-ramp to Sarawak Avenue



Future heavy rail



QLD-NSW Border

*Note: Station names are not final and are working titles only

Stage 4 of the Gold Coast Light Rail is a 13 kilometre extension south of the Light Rail Stage 3, linking Burleigh Heads to Coolangatta via the Gold Coast Airport. The Gold Coast Light Rail system is being designed to be delivered in stages to respond to population growth.

The project will connect communities with businesses, jobs, hospitals and medical facilities, education, shopping, dining, entertainment and sporting centres.

Through this critical infrastructure we will support the Gold Coast and its continued growth for decades to come.

Key Features

- Dual track along the existing corridor alignment
- Improved Palm Beach Avenue precinct
- Improved connectivity to the M1
- Active transport opportunities
- Opportunity to develop a beachfront Oceanway

The Queensland Government and City of Gold Coast have committed \$5 million (joint funding) to undertake a preliminary business case for planning of Stage 4 of the light rail.



BURLEIGH HEADS

Stage 3 currently under construction

West-Burleigh Road

Burleigh Ridge Park

Proposed fauna bridge

Concept only - subject to change

Burleigh Head National Park

Proposed Light Rail Station at Twenty Eighth Avenue

Potential Traction Power Station location

New Active transport bridge

New Light Rail bridge

Jellurgal Aboriginal Cultural Centre

Proposed Light Rail Station at Burleigh Head National Park

Tallebudgera Drive

Twenty Seventh Avenue

PALM BEACH

Tallebudgera Creek





Cypress Terrace

Twenty Fifth Avenue

Nineteenth Avenue

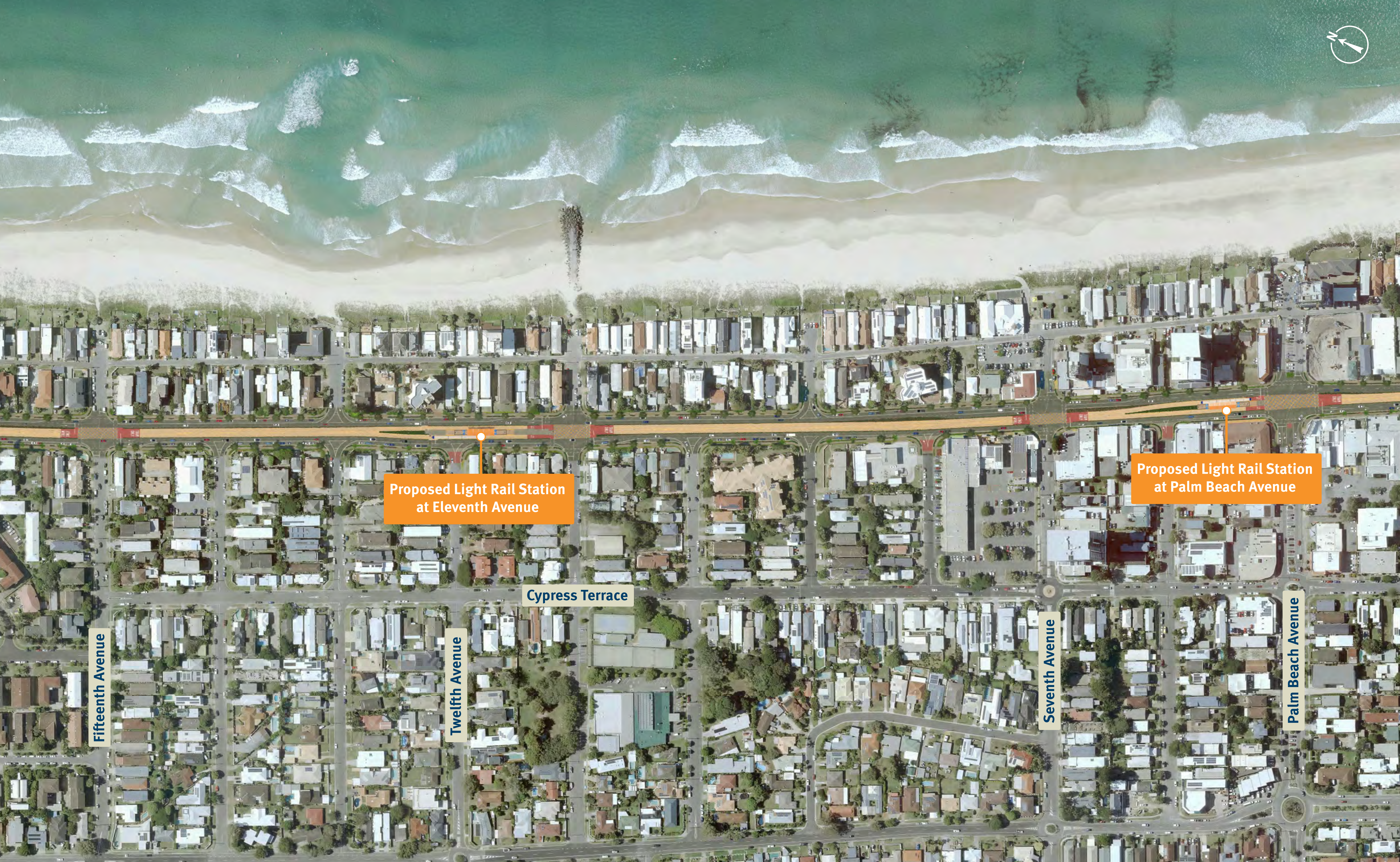
Palm Beach State School

Townson Avenue

PALM BEACH

Proposed Light Rail Station
at Nineteenth Avenue

Concept only – subject to change



Proposed Light Rail Station
at Eleventh Avenue

Proposed Light Rail Station
at Palm Beach Avenue

Fifteenth Avenue

Twelfth Avenue

Cypress Terrace

Seventh Avenue

Palm Beach Avenue



Palm Beach Parklands

Tarrabora Reserve

Potential Traction Power
Station location

Proposed Light Rail Station
at Thrower Drive

Fourth Avenue

First Avenue

Thrower Drive

Palm Beach Currumbin
State High School



Currumbin Wildlife Sanctuary

Tomewin Street

Access to and from Gold Coast Highway closed

Reconfigured intersection

New active transport bridge (subject of separate planning project)

Currumbin Hill Conservation Park

Proposed Light Rail Station at Tomewin Street

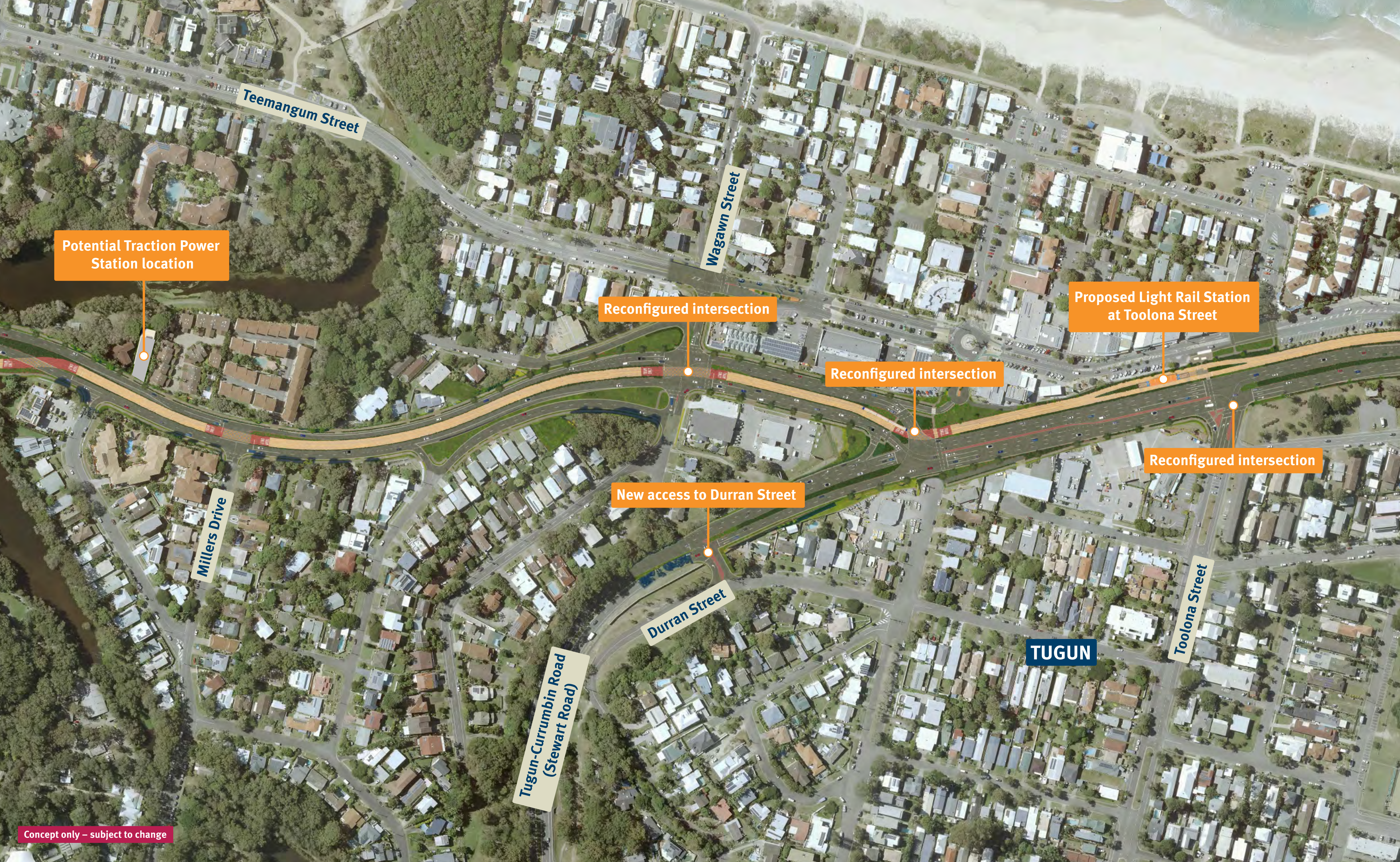
New Light Rail bridge

Beree-badalla Reserve

Currumbin Creek

Duringan Street

CURRUMBIN



Teemangum Street

Wagawn Street

Potential Traction Power
Station location

Reconfigured intersection

Proposed Light Rail Station
at Toolona Street

Reconfigured intersection

Reconfigured intersection

New access to Durran Street

Millers Drive

Durran Street

Tugun-Curumbin Road
(Stewart Road)

TUGUN

Toolona Street



Golden Four Drive

Reconfigured intersection

Proposed Light Rail Station
at Boyd Street

Potential Traction Power
Station location

Gold Coast Highway
(Tugun to Coolangatta)
Multi-modal Corridor
Study currently underway

New intersection access to
Gold Coast Highway

Kitchener Street

Boyd Street

Gold Coast Airport

Tugun Skatepark

For more information:

Freecall: 1800 316 365*

Email: gclr4@tmr.qld.gov.au

Web: www.tmr.qld.gov.au/gclr4

Post: Transport and Main Roads
PO Box 442, Nerang Qld 4211

**Check with your service provider for call costs*

13 QGOV (13 74 68)

www.tmr.qld.gov.au