

Sunshine Coast Major Projects Consultation and engagement insights summary

October 2023



Direct Sunshine
Coast Rail Line



Sunshine Coast
Public Transport



Kawana
Motorway



Mooloolah River
Interchange Upgrade



Queensland
Government

About TMR's major project engagement

The Department of Transport and Main Roads (TMR) undertook an integrated engagement approach to four major projects on the Sunshine Coast.

This engagement provided the community the opportunity to find out more and provide feedback on the Direct Sunshine Coast Rail Line, Sunshine Coast Public Transport, Kawana Motorway and Sunshine Motorway, Mooloolah River Interchange Upgrade.

Consultation was undertaken between Wednesday 19 July to Sunday 20 August 2023. This engagement included a digital engagement platform with an opportunity to provide feedback through surveys, interactive maps and idea walls as well as face-to-face engagement with community and stakeholders.

The local knowledge gathered, identified a range of community challenges and priorities to inform each of the projects.



Consultation and engagement summary



4.5 week
consultation
period



7 community
information
sessions

Engagement outcomes



Almost 61,000
views across
5 pages



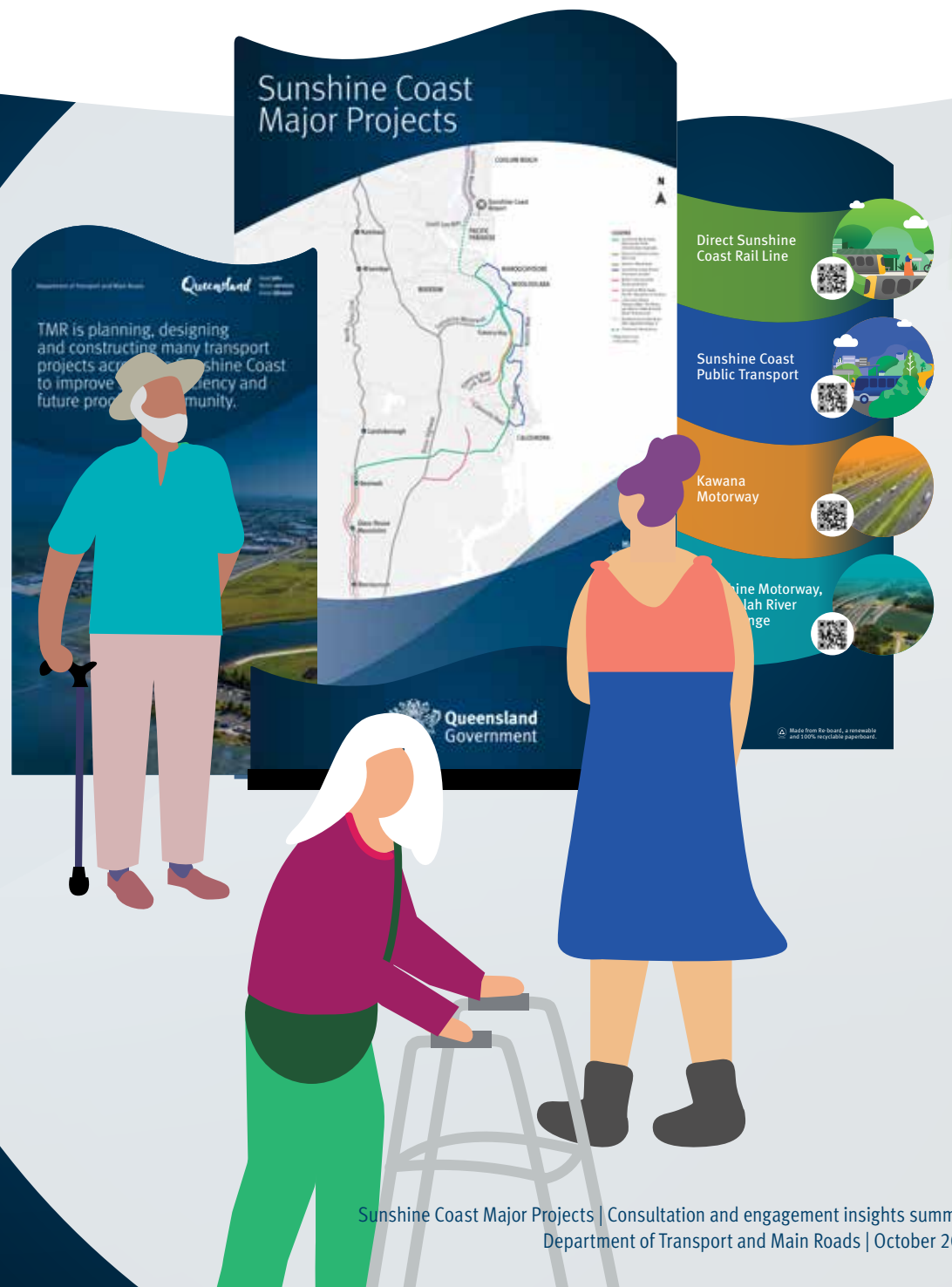
More than
26,000 visitors



1660 contributions
from 1233
contributors



Almost 500 people
attended one of the
7 information
sessions



About TMR's major project engagement



Direct Sunshine Coast Rail Line

Feedback snapshot

544
responses
to survey

132
responses
to stations
survey

64
responses
to active
transport
survey

158
comments
on the
visioner tool

"Gosh build it already. This is way overdue. Having railway access through the Coast and on to Brisbane to avoid the highway would be amazing."

"Would also provide a great intra-region transport option within the Sunshine Coast...get some cars off the (now cluttered) local roads."

"I would like to use the trainline for appointments, recreation, work and study. I am very excited and may be able to be a one car household."

"Shortens travel time between Sunshine Coast and Brisbane for work and for recreational purposes. Less traffic and better for the environment."

"Commute to the UniSC Moreton Bay campus as well as Brisbane."

"Bike ride from my house to Birtinya Station, then rail to Maroochydore for work. Also, bike to Birtinya, rail to Brisbane to visit family."

Key feedback themes:



Construction
start date



Active
transport



Corridor
alignment



Improved travel
times and less
congestion



Environmental
impacts



Design
suggestions



Visual/amenity
impacts



Property
impacts



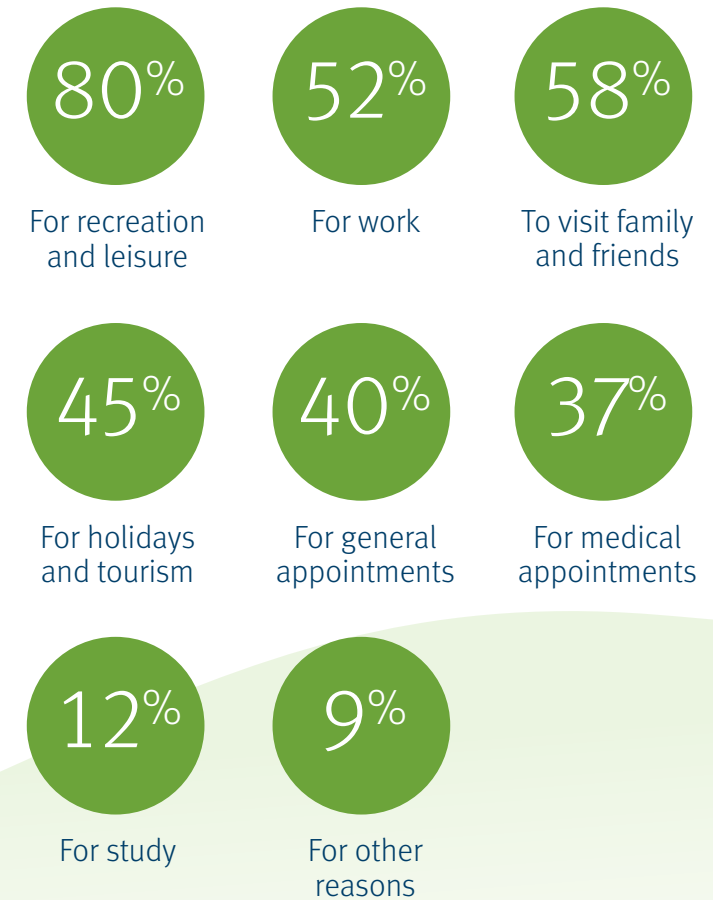
Integration
with Sunshine
Coast Public
Transport

Direct Sunshine Coast Rail Line

88 per cent of respondents said the rail line would encourage them to use public transport more frequently.

89.29 per cent would read or listen to music while on the train, 38.59 per cent would work and 9.7 per cent would study, with the remaining respondents selecting 'other' activities such as 'quiet contemplative time', 'catching up on social media', 'watching the beautiful Sunshine Coast landscape go by', 'knitting', 'relaxing' and 'railfanning'.

Reasons for travelling on the rail line were:



Sunshine Coast Public Transport

Feedback snapshot

344
responses
to survey

88
comments
on the
visioner tool

185
pins on
interactive
map

"Public transport is extremely limited with 1 bus/hr. I'm blind and spend thousands a year on Ubers. A train and light rail is necessary."

"I use public transport if I can't ride my bike, however it makes trips about 3-4 times longer than a car. I hope new services will be faster."

"I think using electric buses is the best option as it provides environmentally friendly, cheaper to construct bus lanes and flexible routes."

"Light rail would be a great safe alternative for the kids to get around instead of having to drive them everywhere."

"Whatever the mass transit solution, it needs to be implemented ASAP and link with the heavy rail line. We need to think of future generations."

"Rapid public transport (light rail or bus) and heavy rail must be prioritised over wasteful and congestion creating highway projects."

"Connecting Maroochydore (CBD) with Mooloolaba beach (holiday/lifestyle/destination) is a great idea."

"I drive weekly to Kawana, Mooloolaba and Maroochy due to the lack of options. Traffic can be bad. We need simple, effective transport solutions."

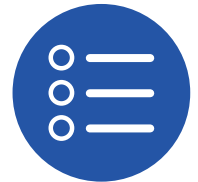
Key feedback themes:



Reliability



Frequency



Option/mode preference



Accessibility



Affordability



Active transport



Design suggestions



Integration with Direct Sunshine Coast Rail Line

Sunshine Coast Public Transport

Project elements of most interest to respondents included the preferred option/mode, closely followed by the corridor/route, and location of stops/stations.



Greater reliability

Was rated the top benefit of a better public transport system.



Active transport

Was ranked the most critical piece of infrastructure to support a future public transport system.

80%

Primarily travelled by private car through the area, with the most common reason being convenience or having no other viable option.

79%

Agreed or strongly agreed that many local trips were being made via major arterial roads.

79%

Agreed or strongly agreed that local residents rely heavily on their private vehicles due to limited other transport options.

88%

Agreed or strongly agreed that rapid urban expansion was an emerging issue for the Sunshine Coast.

73%

Agreed or strongly agreed that traffic congestion on the Sunshine Coast was a frequent and regular issue.

More dependable services and increased frequency would entice more people to use public transport.

Kawana Motorway

Feedback snapshot

88 responses to survey

Key feedback themes:



Environmental impacts



Public transport instead



Active transport



Traffic capacity



Design suggestions



Property impacts



Planning



Timing

"Get it done - I think it will improve the accessibility of the Sunshine Coast and improve the traffic flow and congestion."

"Believe this is a good start in helping that area improve the congestion that is ever increasing."

"I support the project, but the environmental impact on Leacey's Bushland Conservation Reserve needs to be considered and factored into the design."

"Encourage active and public transport instead."

"Active Transport links should be inclusive and accessible: walk/bike/scoot/roll."

"Looks like a good design, well done."
"This is a well-thought-out design and plan."

"You need to add ramps to let traffic head south from northern interchange and at the interchange in line with Lake Kawana Blvd."

"Concept designs are good and very closely follow the original CAMCOS alignments. Corridor seems very narrow in places to accommodate a rail line."

Kawana Motorway

Respondents were asked to provide comments on the concept design of Kawana Motorway.

31 per cent of respondents felt very strongly about public transport being a better alternative to Kawana Motorway. There were quite a few requests for heavy rail and clean energy buses. Most people who commented about rail are against light rail.

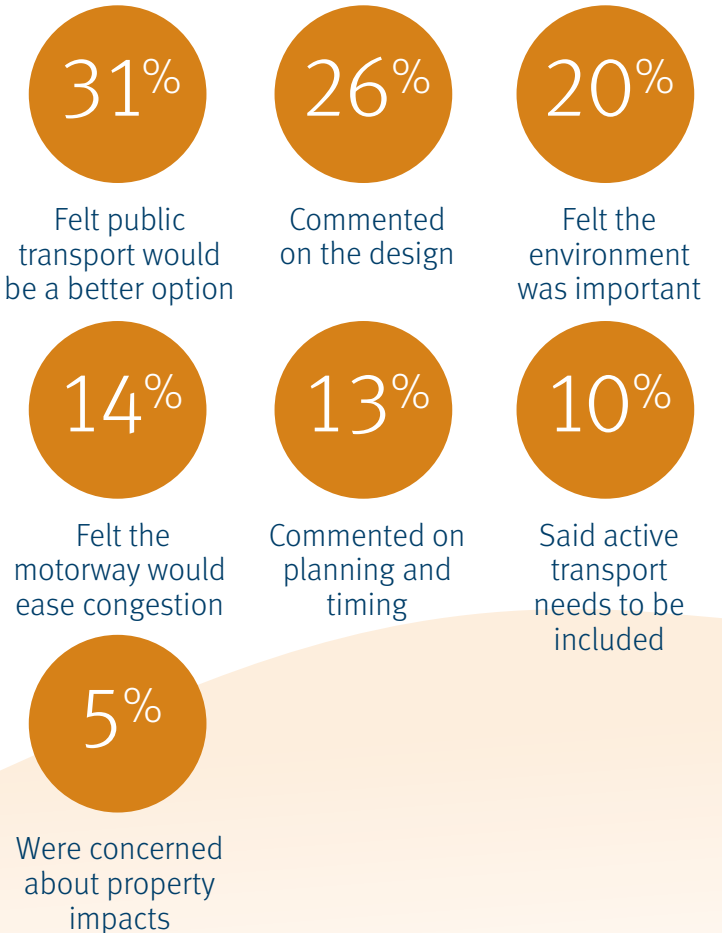
26 per cent of the respondents commented on the design of the motorway. Some people were happy with the proposed concept designs while others felt that a motorway would make the beautiful Sunshine Coast look like a concrete jungle.

The environment is important to 20 per cent of the respondents and many people are concerned about the impact that Kawana Motorway will have on the surrounding Kawana Forest Bushland Reserve. Feedback showed that respondents want the motorway but do not want to impact the surrounding bushland.



Artist's Impression only.

Summary of responses from the community:



Mooloolah River Interchange Upgrade

Feedback snapshot

7220

page views
via Social
Pinpoint

4967

page visits
via Social
Pinpoint

75

responses
via Social
Pinpoint

"Get it done - I think it is needed to make the interchange easier, but also benefitting from having the Kawana Way link as well."

"This is a good design but all stages need to be fully completed before the real benefits are gained and traffic congestion significantly reduced."

"An active transport connection from MRI to Kawana is an essential to fill the current missing link."

"As somebody who travels on this road daily and witnesses the near misses and congestion at almost all times of day, this project cannot be delayed."

"During and after construction please give flora and fauna a high priority."

"I'd like to understand road noise that will affect areas such as Brightwater, Mountain Creek."

Key feedback themes:



Improved safety
by removing
traffic weaving



Requests for
immediate
construction start



Improved active
transport links



Reduced congestion
/improved north-
south connectivity



Environmental
impacts



Integration
with other
projects



Visual/amenity
impacts



Noise
attenuation



Property
impacts

Mooloolah River Interchange Upgrade

More than 250 items of feedback were received via the Social Pinpoint online engagement platform, email, telephone, and the community information sessions during the Sunshine Coast Major Projects consultation period.

The majority of the community recognises the need for the MRI Upgrade project to improve connectivity and safety and remove traffic weaving.

Many recognise that the project has been around for several years and have called for construction to begin immediately.

General feedback themes included timeframes, staging, connectivity, active transport, environmental concerns and noise attenuation.

At the information sessions, community members were interested to learn about the project and feedback received was generally positive, with a focus on when construction would commence.

Some feedback was less supportive for reasons such as property impacts, noise and inconvenience that construction may cause.

There were also some enquiries about environmental matters such as visual amenity and concern for local flora and fauna.

In response to community commentary, additional noise assessments are being undertaken. The height and make of the noise barriers will be determined during the detailed design phase once noise assessments have been completed. If a property is identified as requiring additional noise mitigation treatments beyond those delivered within the road corridor, the project team will consult directly with affected property owners.

More than seven km of new active transport infrastructure has been included in the design layout for pedestrians, bike riders and other pathway users throughout the project area. Following community feedback, the new shared pedestrian and bike rider facilities will be refined further during detailed design to provide safer, faster, and more direct connectivity.

Extensive environmental field investigations and studies started in March 2022 and are ongoing. As the design progresses, environmental measures will be considered and included where appropriate.



Artist's Impression only.

