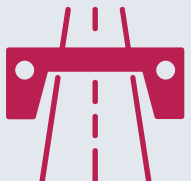


Coomera Connector Stage 1: Coomera to Nerang



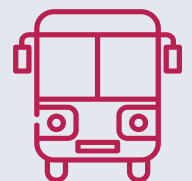
The Coomera Connector will be a high-speed motorway style road



Grade-separated interchanges will minimise impacts on existing traffic network



A shared path for walking and bike riding will improve opportunities for active transport



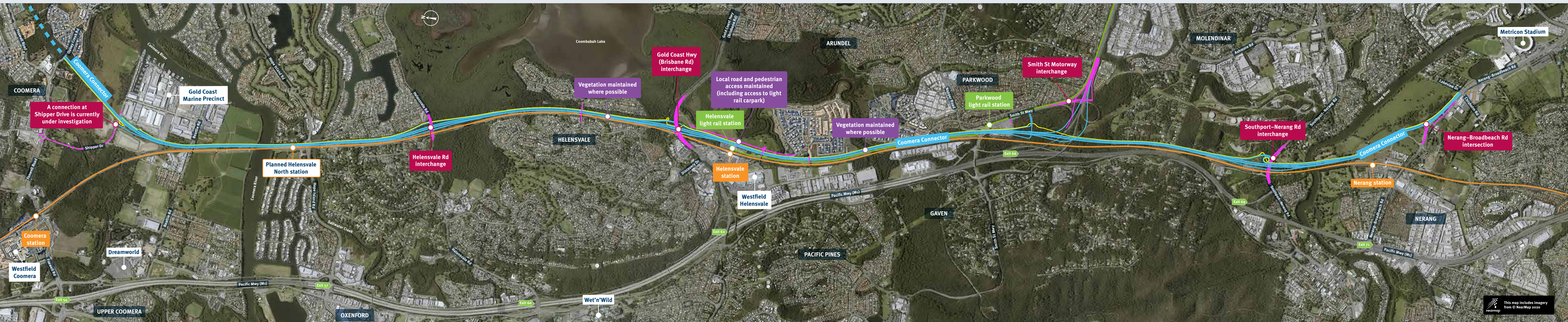
Bus priority measures and new bus routes will improve public transport outcomes



Noise barriers will form part of the design to minimise impact of road traffic noise



Wildlife sensitive design and exclusion fencing will allow safe wildlife movement



Legend

- Coomera Connector
- Shared path
- Supporting road network upgrades
- Under investigation
- Light rail
- Heavy rail

Connecting to Coomera

Investigations are continuing to determine where the northern end point will be for Stage 1 of the Coomera Connector.

An interchange at Shipper Drive is currently under investigation as an alternative to Oakey Creek Road. An interchange at Shipper Drive would facilitate access to the Gold Coast Marine Precinct and commercial precinct near Beattie Road.

Access to Coomera would be via Shipper Drive to Foxwell Road including an upgraded intersection at Foxwell Road.

Hope Island Road investigations

The Coomera River area is highly constrained with the rail corridor and planned Helensvale North station to the west of the Coomera Connector corridor and residential properties to the east.

Investigations have concluded that it is not feasible to provide a connection to Hope Island Road due to the significant number of residential properties and businesses that would need to be acquired.

Access to the Coomera Connector for Hope Island, Sanctuary Cove and Paradise Point will be provided via the interchange at Helensvale Road.

Helensvale Road interchange

The Coomera Connector will be elevated over Helensvale Road, minimising impacts to traffic flows on Helensvale Road.



Gold Coast Highway interchange

At Helensvale the Coomera Connector will run under the Gold Coast Highway, minimising impacts to traffic flows on the Gold Coast Highway.



Smith Street Motorway interchange

At Parkwood the Coomera Connector will be elevated over the light rail park'n'ride facility, Smith Street Motorway and the light rail.



Southport-Nerang Road interchange

The Coomera Connector will be elevated over Southport-Nerang Road minimising impacts to traffic flows on Southport-Nerang Road.



Nerang-Broadbeach Road intersection

The Coomera Connector will start on Nerang-Broadbeach Road just west of Mettricon Stadium providing an additional crossing over the Nerang River. Access to local businesses will be maintained.

