

# Logan and Gold Coast Faster Rail

## Area 3: Logan River to Holmview Road

We're planning to connect our growing communities with more frequent and reliable train services between Brisbane, Logan and the Gold Coast.

To support growing population and rail patronage demand between Brisbane, Logan and the Gold Coast, we need to double the number of Beenleigh and Gold Coast train services over the next 20 years. The rail line between Kuraby and Beenleigh is a key capacity bottleneck on the rail corridor.

The Queensland Government, together with the Australian Government, is planning to increase the number of tracks between Kuraby and Beenleigh from two to four tracks, with modernised rail systems, station upgrades and level crossing removals. Currently, trains between Kuraby and Beenleigh share a single track in each direction, limiting the number of peak services that can run. Additional tracks will require a wider corridor and track straightening in some areas.

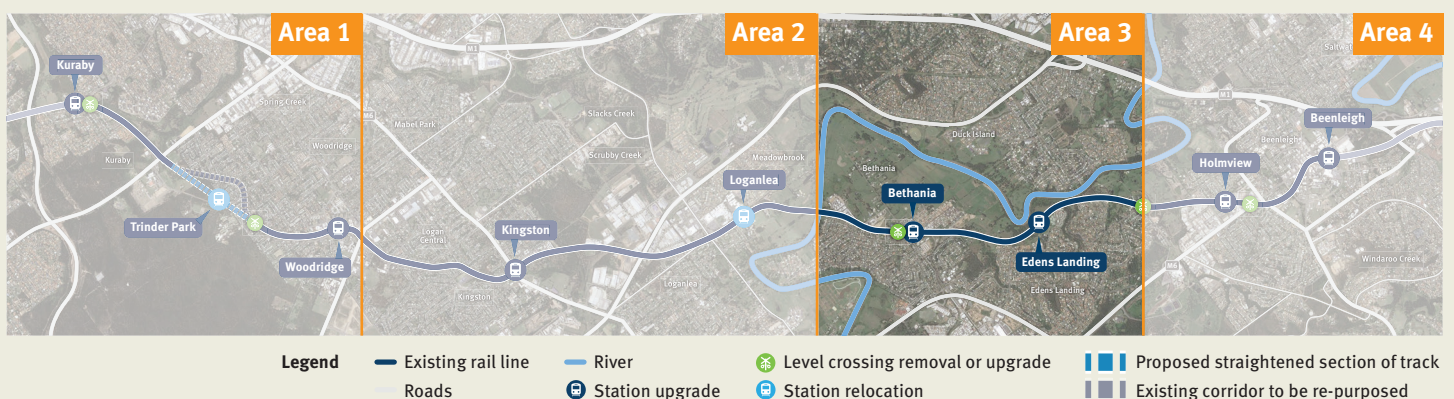
The project covers a large section of the rail corridor between Brisbane and the Gold Coast, and the Department of Transport and Main Roads (TMR) understands communities near the rail line may be affected. In order to gain a greater understanding of community needs, TMR has divided the area between Kuraby Station and Beenleigh Station into four sections.

### What is happening in your area

Planning is underway to upgrade the rail corridor, systems and train stations between the Logan River and Holmview Road.

This is one of four fact sheets, to provide you with more information about each section of the project.

The map overleaf identifies the changes between the Logan River and Holmview Road.

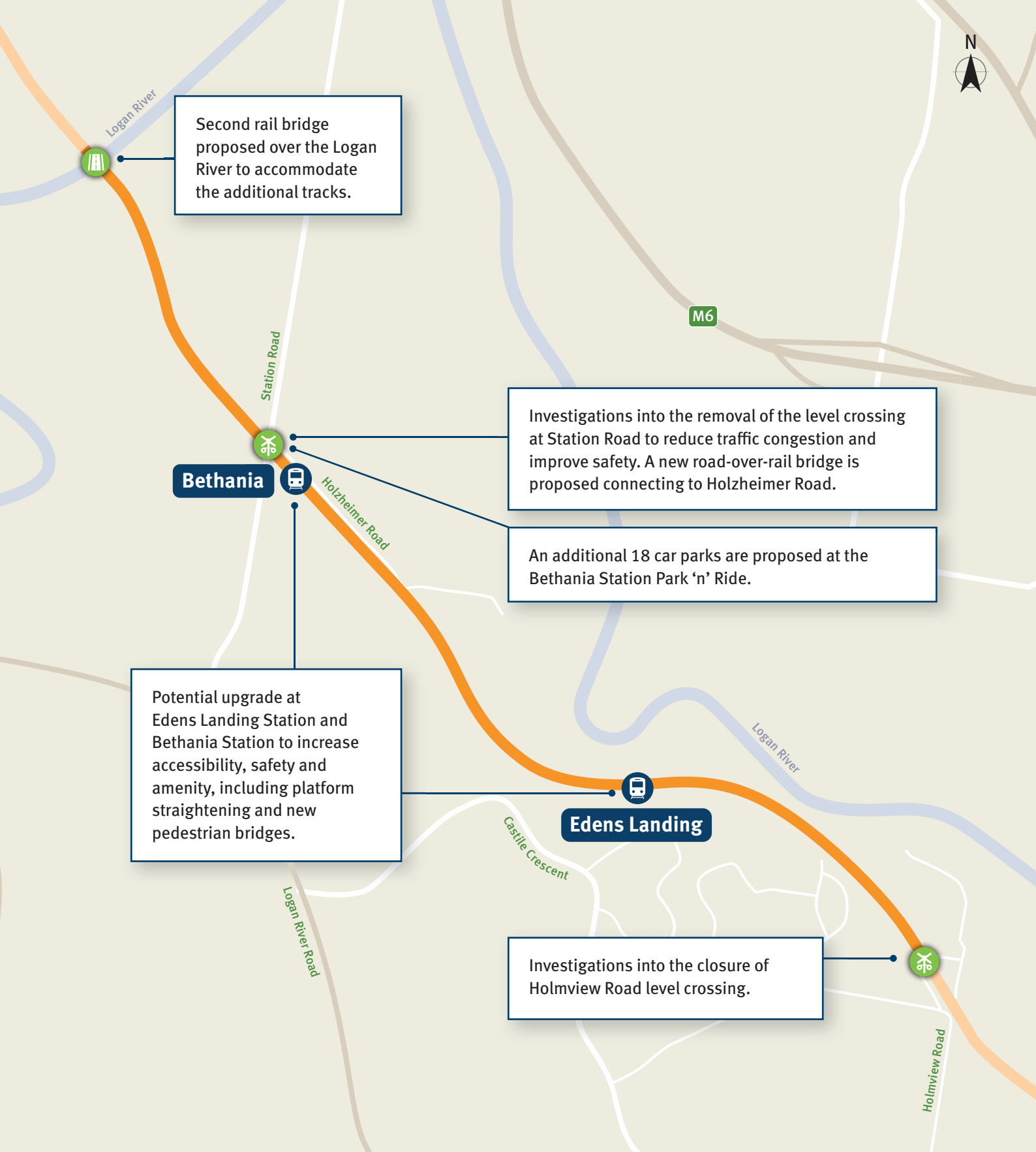


Australian Government

**BUILDING OUR FUTURE**



Queensland Government



The project team will host sessions to share information and collect feedback on the project. For more information, visit our online engagement hub at: [www.tmr.qld.gov.au/logangoldcoastrail](http://www.tmr.qld.gov.au/logangoldcoastrail).

This map is approximate and is provided for public consultation purposes only. Logan and Gold Coast Faster Rail is subject to further design, approvals and community consultation.

**Contact us** Phone: 1800 957 066 Email: [logangoldcoastrail@tmr.qld.gov.au](mailto:logangoldcoastrail@tmr.qld.gov.au)



If you need an interpreter call the Translating and Interpreting Service (TIS National) on 131 450. If you are deaf or have a hearing or speech impairment, contact us through the National Relay Service, [www.replayservice.gov.au](http://www.replayservice.gov.au)

**13 QGOV (13 74 68)**

[www.tmr.qld.gov.au](http://www.tmr.qld.gov.au) | [www.qld.gov.au](http://www.qld.gov.au)