

Logan and Gold Coast Faster Rail

Concept only. Subject to change.

Level crossing removals

November 2023

With a growing population in South East Queensland, it's important our transport networks help people travel safely and efficiently.

During morning and afternoon peak hours, the boom gates at level crossings along the Logan and Gold Coast Faster Rail (LGC) project corridor can be down for up to 30 minutes of every hour.

Overview

As part of the LGC project, the Department of Transport and Main Roads (TMR) will remove level crossings and deliver local road and intersection upgrades to improve safety and reduce traffic congestion.

Level crossings will be removed at:

- Beenleigh Road, Kuraby – upgraded with a road-over-rail bridge
- Trinder Crossing, Woodridge – closed, with a road-over-rail bridge at Acacia Road
- Station Road, Bethania – upgraded with a road-over-rail bridge
- Holmview Road, Beenleigh – closed, with local road network upgrades to maintain access
- Spanns Road, Beenleigh – closed, with local road network upgrades to maintain access.

Have your say

Scan the QR code or visit the online engagement hub at tmr.qld.gov.au/logangoldcoastrail to have your say and find out about community drop-in sessions.





Beenleigh Road, Kuraby

The level crossing at Beenleigh Road, Kuraby will close and be replaced with a road-over-rail bridge. New road connections will link to the upgraded Kuraby station and park 'n' ride, as well as to existing community facilities such as Wally Tate Park and Kuraby Mosque via Jacob Lane. Pedestrian connections will also be provided to allow people to safely walk and ride along this section of Beenleigh Road and over the rail corridor.



Station Road, Bethania

The level crossing at Station Road, Bethania will be closed and replaced by a road-over-rail bridge. Holzheimer Road will be realigned to accommodate the wider rail corridor and extended around the Bethania Aquatic Centre and Community Centre, connecting to Station Road near Noffke Park. The new bridge will include a footpath for pedestrian connectivity, and there will be a new signalised intersection at the entry of the upgraded Bethania station park 'n' ride. Changes to the local road network will maintain access to Bethania Waters Shopping Centre.



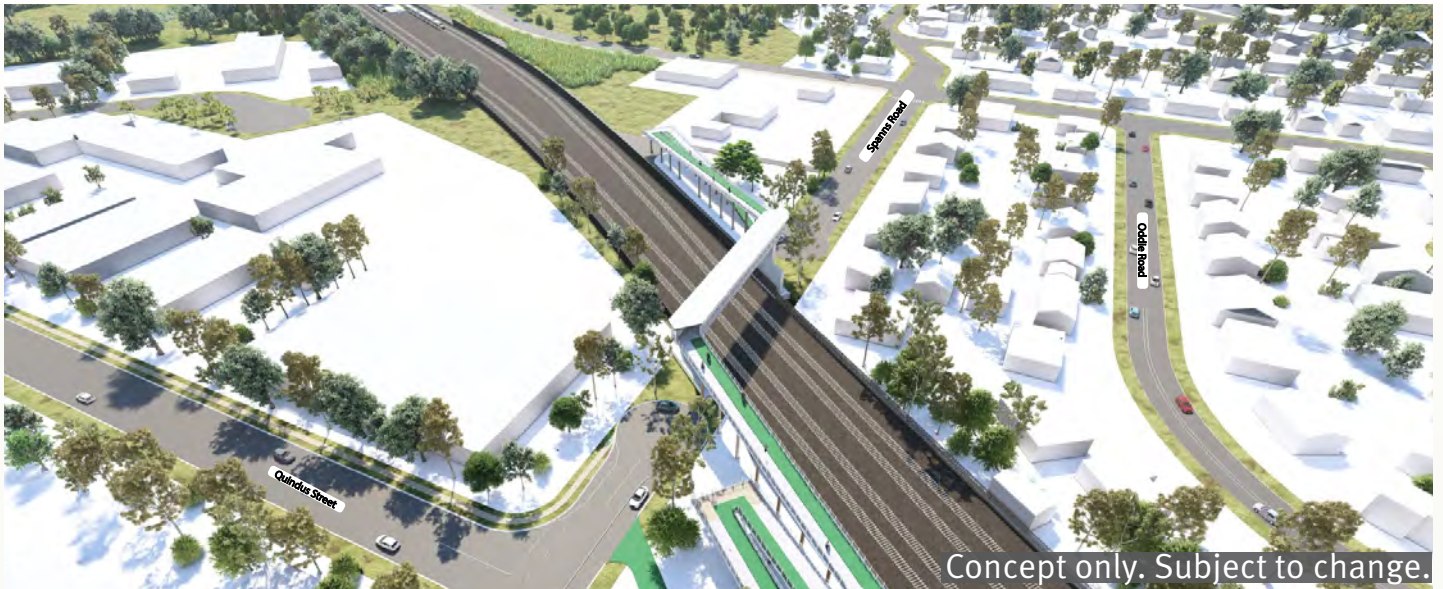
Trinder Crossing, Woodridge

The Trinder Crossing level crossing (between Railway Parade and Station Road, Woodridge) will close and be replaced with a new road-over-rail bridge at Acacia Road, with new local road connections through to Smith Road. The new bridge will be closer to the relocated Trinder Park station. Pedestrian connections will be provided over the rail corridor.



Holmview Road, Beenleigh

The level crossing at Holmview Road, Beenleigh will be closed. The closure is the result of a range of factors including safety and current and projected traffic counts in the area. To maintain access for residents in this area, a new road will be constructed, connecting Holmview Road to Chapman Drive and a new pedestrian connection will be provided over the rail corridor. Flood resilience was considered as part of the design for this new road.



Spanns Road, Beenleigh

TMR has investigated two options for Spanns Road either upgrading the crossing with a road-over-rail bridge or closing the crossing. As a result of these investigations and further assessment of traffic counts and flood modelling, Spanns Road level crossing will be closed. Both sides of Spanns Road will be turned into cul-de-sacs, and improvements will be made to local roads and alternative access routes. TMR will upgrade the intersections at Chapman Drive and Boundary Street, and Boundary and Kokoda streets. Flood resilience upgrades will also be delivered along Kokoda Street and new pedestrian connections will be provided over the rail corridor.

Your feedback

Have your say on level crossing removals by providing feedback online or by visiting the project team at a community drop-in session. You can find the dates and times on the project website. Feedback will be used to inform future design and engagement activities.

Stay up to date

To stay up to date, sign up for project updates by emailing us at logangoldcoastrail@tmr.qld.gov.au

The Logan and Gold Coast Faster Rail project is jointly funded by the Australian and Queensland governments and is subject to further government approvals.

Contact us



Phone: **1800 957 066** (Monday to Friday, 9am – 5pm)



Email: logangoldcoastrail@tmr.qld.gov.au



Website: tmr.qld.gov.au/logangoldcoastrail



Contact us for alternative accessible formats