



Sunshine Coast Public Transport

Proposed station locations

As part of the Sunshine Coast Public Transport detailed business case, 18 stations have been proposed within Stage 1 of the project area, between Maroochydore and Birtinya. Station locations for Stage 2, between Birtinya and Caloundra, will be determined as part of future planning.

How are stations planned?

Locations have been determined through careful consideration of:

- Proximity to key destinations and attractions
- Access by different users, including links with active transport routes
- Spacing between other stations and interchanges
- Average vehicle operating speeds
- End-to-end journey times
- Forecast growth
- Passenger demand and trip purpose
- Efficiency of the broader transport network.



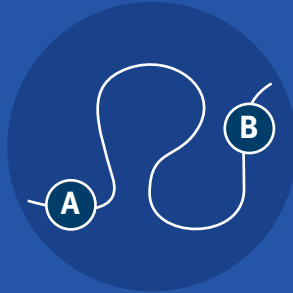
Artist's impression of a bus rapid transit vehicle at a minor interchange station.



Fast facts



Stations are located in close proximity to key activity centres and attractors.



Stations are spaced, on average, approximately 800 metres apart along the length of the route.



Stations are located close to crossings to ensure ease of access for all users.



How has community feedback been used to plan proposed stations?

Community feedback captured via TMR's interactive map as part of consultation carried out in mid-2023 has been carefully considered. Feedback highlighted support for conveniently located stations, accessibility, active transport connections and careful integration within the community.



Station types

Stations have been categorised into two different types:

Interchange stations

Standard stations

Interchange stations

Interchange stations provide for high patronage in mixed use areas with high pedestrian activity. Interchange stations can be major or minor and provide for connections with heavy rail (Direct Sunshine Coast Rail Line) and/or high frequency local bus services.



Scan this QR code to view artist's illustrations in more detail.



Artist's impression of a major interchange station at Birtinya, showing connections between the Direct Sunshine Coast Rail and the Sunshine Coast Public Transport projects.



Artist's impression of a light rail vehicle at a standard station.

Standard stations

Standard stations provide for low to medium patronage located near residential areas or community facilities. They are mainly accessed by pedestrians and bike riders.

Station character

TMR aims for stations to balance the function of public transport with placemaking elements that complement the Sunshine Coast character and lifestyle that everyone knows and enjoys.

Stations will include design elements that showcase local identity through art, history, storytelling, landscaping and streetscaping, while also providing consistent and familiar features that support accessibility and wayfinding.

To achieve this, TMR has identified five distinctive character types for areas along the corridor, which are inspired by local settings and surroundings. These character types will help inform the future look and feel, and design elements of the stations.

The character types include:



Coastal

Coastal stations are located in close proximity to beaches and tourism accommodation. The Coastal character is inspired by headland rock forms, ocean outlooks and warmth.



Natural materials and tones will help create relaxed, green and shady spaces.



Town Centre

Town Centre stations are located within urban renewal and employment zones. The Town Centre character takes inspiration from new, sustainable city centre precincts.



Neutral colours, leafy plants and First Nations storytelling elements will help create shady outdoor meeting places that cater for day and night time use.



Neighbourhood

Neighbourhood stations are located in close proximity to residential areas. The Neighbourhood character is inspired by the local communities in which the stations fall, and local businesses.



Active streetscapes, street furniture and public art by local artists will enhance the low key and relaxed lifestyle of stations within these areas.



Gateway

Gateway stations are located in areas that fall between major Town Centre areas. The Gateway character is inspired by nature, providing an inter-urban break between key destinations.



Lush planting, shady pocket parks, integrated shelters and street furniture, and public art will complement the surroundings of these areas.



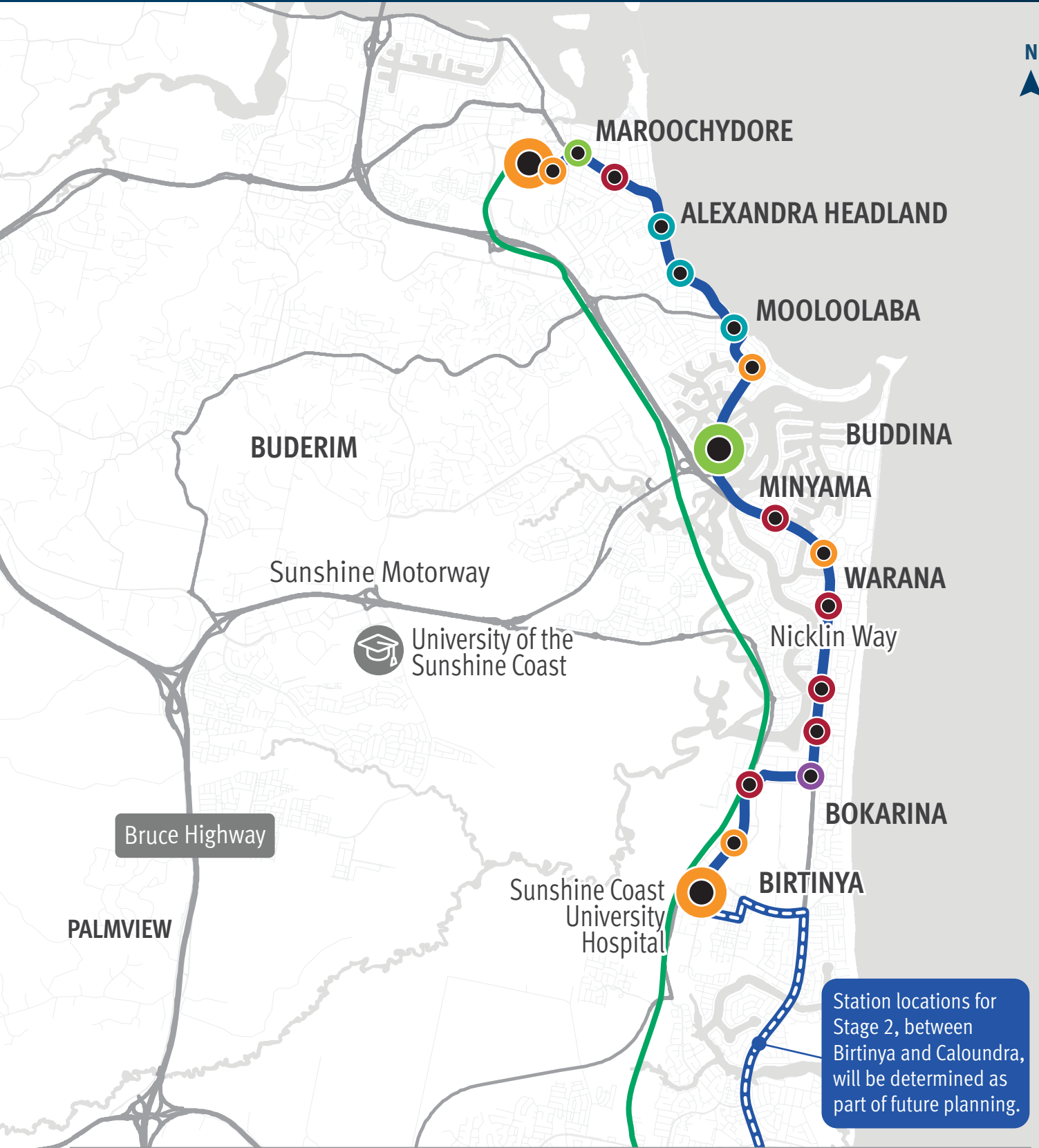
Event

Event stations are located in areas that host major community, cultural and sporting events. The Event character area is inspired by the headline events which the region hosts now and in future.



Architectural arbours, wayfinding totems and bright, oversized street furniture will be featured to create vibrant, exciting spaces.

Station location map



**Locations of stations are subject to change.*

Station access and features

Getting to and from stations

In addition to connections with the Direct Sunshine Coast Rail Line, the Sunshine Coast Public Transport project includes upgrades to the bus network to ensure communities along the route have efficient connections to stations, key destinations and surrounding areas.

The project will also provide active transport facilities around stations and along the corridor to connect key communities and centres.

At station features



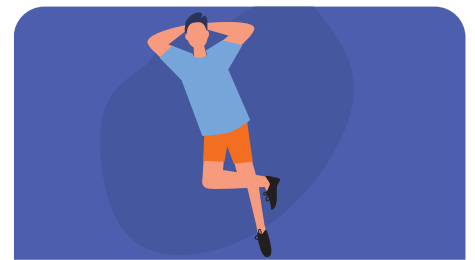
Accessibility

All stations will be accessible to everyone in the community.



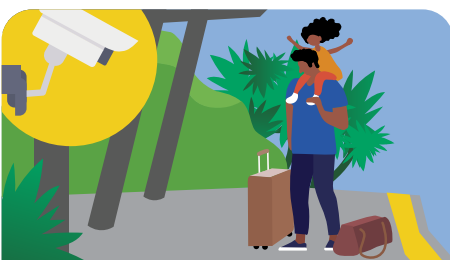
Active transport

To support active transport options, stations will feature facilities and infrastructure to accommodate bikes and other micro-mobility devices.



Passenger comfort

Seating, shelters and nearby water refill points will ensure comfortable journey experiences, with toilets provided at major interchange stations.



Safety


In accordance with Crime Prevention Through Environmental Design (CPTED) principles, stations will include CCTV cameras, lighting and help points.




Ticketing and information

Customer information will be provided via display screens, timetables and hearing loops, with ticketing facilities also included.

Contact us

 1800 407 533
(8.30am to 4.30pm)

 scpublictransport@tmr.qld.gov.au

 Sunshine Coast
Public Transport
Department of Transport
and Main Roads
PO Box 1600
Maroochydore Q 4558