

# Gateway Motorway and Bruce Highway Upgrades



## Environment

**FACT SHEET**  
**2023**

### Overview

As part of planning for the Gateway Motorway and Bruce Highway Upgrades (GMBHU) project, the Department of Transport and Main Roads (TMR) is engaging with the community, including local environmental groups and traditional owners of the land to gather feedback on how to minimise project impacts to the local environment.

The project team is undertaking comprehensive investigations into all potential impacts including noise, air quality, flora and fauna, water quality, and cultural heritage. Throughout all stages of delivery including planning, design and construction, TMR will put in place a range of measures to protect and preserve the natural environment as much as practically possible.

### Areas of environmental significance

There are several areas of environmental significance near the Gateway Motorway and Bruce Highway that may potentially be impacted by the upgrades, including Moreton Bay Ramsar wetlands, Moreton Bay Marine Park, Tinchi Tamba Wetlands, Deagon Wetlands, Freshwater Creek, Hays Inlet Conservation park, Bald Hills Creek and the Pine River.

### Fauna

TMR recognises the area surrounding the project is home to many animals, including koalas. TMR is working with the Department of Environment and Science and local councils to undertake rigorous assessments in accordance with relevant legislation and to identify opportunities to protect local wildlife.



Gateway Motorway Bruce Highway merge, Pine River looking north.







Left: TMR installing fauna monitoring equipment.

Top right: Monitoring equipment.

Bottom right: Koala drone survey infra-red imaging.

As part of early planning, a baseline fauna monitoring program has been completed to help identify where animals may be moving within the existing road corridor, including whether they are using existing structures such as under bridges and culverts to cross the road corridor. The results show native species such as eastern grey Kangaroo and Swamp Wallaby and a variety of bird species cross the project area via these structures as well as invasive species such as cat, dog and red fox.

TMR also undertook a specific koala survey to understand koala distribution, abundance, and demographics within the project and broader area. This involved a drone survey in mid-2021 using thermal detection technology, followed by on-ground searches in late 2021. During this assessment, koalas were only detected in areas north of the Pine River, in the Moreton Bay Region. The local koala population in these areas appeared to be relatively healthy, with plenty of young joeys spotted.

## Fauna connectivity

As part of the business case phase, TMR has considered fauna movement infrastructure, including fauna crossings and fauna fences in the preliminary designs. Where possible, this infrastructure will support fauna connectivity and reduce the likelihood of animals accessing the road corridor in future.

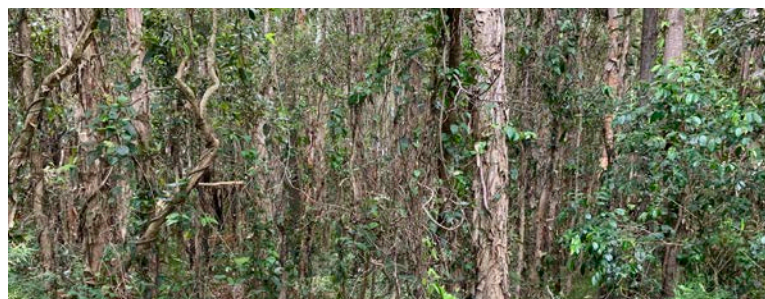
At this stage in the planning, fauna underpasses are proposed at Bald Hills Creek under the Gateway Motorway, at Gateway Motorway, Bruce Highway and Gympie Arterial Road Interchange and on the north side of the Pine River to support fauna movement in the area.

When determining the location and type of fauna connectivity structures, TMR considers the local landscape/topography, associated vegetation impact, availability of viable habitat on both sides of the road, approach to entry/exit of structures and the local fauna movement strategy in the area.

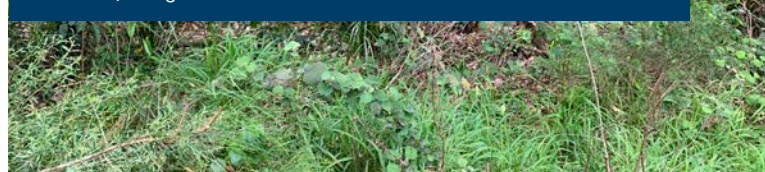
Locations for supporting fauna furniture such as refuge and escape poles and ledges will be further determined as planning progresses.

## Trees and vegetation

TMR is committed to preserving as many trees as possible. Unfortunately, some trees and shrubs will need to be removed. Native trees and plants will be incorporated into the landscape plan for replanting of the project area, once construction is complete. Offset planting will also be undertaken in accordance with legislative requirements.



Bushland, Mango Hill.







TMR water sampling.

## Cultural Heritage

TMR is carefully considering areas of cultural heritage or historical significance in the project area and will undertake a Cultural Heritage Risk Assessment during planning. Consultation with local traditional owners has been ongoing throughout the project planning.

TMR is aware of a scar tree, which holds significance in the local indigenous community, within the Bald Hills area and will take this into consideration as part of the planning, design and construction of the project.

## Sustainability

TMR will investigate the use of innovative methodologies and sustainable materials throughout the project's planning, design, and construction.

During project delivery phases, TMR considers:

- minimising the use of non-renewable resources
- financial impacts on future generations
- whole-of-life costs of materials
- resilience of existing and future infrastructure

- interactions between the transport system and human health impacts
- minimising transport's contribution to global climate change.

The project will be assessed under the Infrastructure Sustainability Council's (ISC) Infrastructure Sustainability Rating Scheme. The ISC scheme provides an independent, verified assessment of the sustainability of an infrastructure project.

If you would like further information or would like to provide specific feedback on environmental and culture heritage management for the project, please get in touch with the project team on the details below.

TMR Cultural team excavating.



## Contact us

The project team is available to answer questions and record your feedback.

Phone: **1800 607 755\***

(Monday to Friday, 9am–5pm)

Email: **GMBHU@tmr.qld.gov.au**

Web: **tmr.qld.gov.au** and search for 'Gateway Motorway and Bruce Highway Upgrades'

Post: GMBHU Project Team,  
TMR Metropolitan Region,  
PO Box 70, Spring Hill, Brisbane 4004

\* Free call from anywhere in Australia, call charges apply for mobile phones and pay phones. Check with your service provider for call costs.

**13 QGOV (13 74 68)**

[www.tmr.qld.gov.au](http://www.tmr.qld.gov.au) | [www.qld.gov.au](http://www.qld.gov.au)