

Bruce Highway northbound over Pine River.

Newsletter – November 2022

Gateway Motorway and Bruce Highway Upgrades (GMBHU) project

North Brisbane to Moreton Bay Region

The Department of Transport and Main Roads (TMR) is progressing integrated planning to cater for increasing traffic demands and improve safety on the Gateway Motorway and Bruce Highway road corridors.

Significant population growth and current demand indicates traffic levels will increase by more than 50 per cent by 2041. Without upgrades, this vital section of the National Highway will be heavily congested for longer periods, with travel times significantly increasing for motorists.

The Australian and Queensland governments have committed a total of \$2.1 billion (on an 80:20 funding basis) for upgrades to the Gateway Motorway (\$1 billion) and Bruce Highway (\$1.1 billion).

Due to the significant size and complexity of the area, TMR is developing three business cases as part of an integrated approach to planning for the GMBHU project. These investigate upgrading the:

- Gateway Motorway from Bracken Ridge to the Pine River
- Bruce Highway from the Gateway Motorway and Gympie Arterial Road to Dohles Rocks Road
- Bruce Highway from Dohles Rocks Road to Anzac Avenue.

From this planning, TMR will develop a whole-of-network solution for the area that reduces congestion and improves safety, travel time reliability, connectivity and accessibility.



Have your say

Share your feedback

Community consultation is open until 9 December 2022. TMR is seeking community feedback on the business case options being investigated for the GMBHU project. Tell us what you think, by:

- visiting the GMBHU project webpage <https://www.tmr.qld.gov.au/projects/gateway-motorway-and-bruce-highway-upgrades-north-brisbane-to-moreton-bay-region>
- completing the online survey
- leaving comments on the online interactive map
- talking with us at upcoming drop-in sessions (see overleaf for session dates and times).



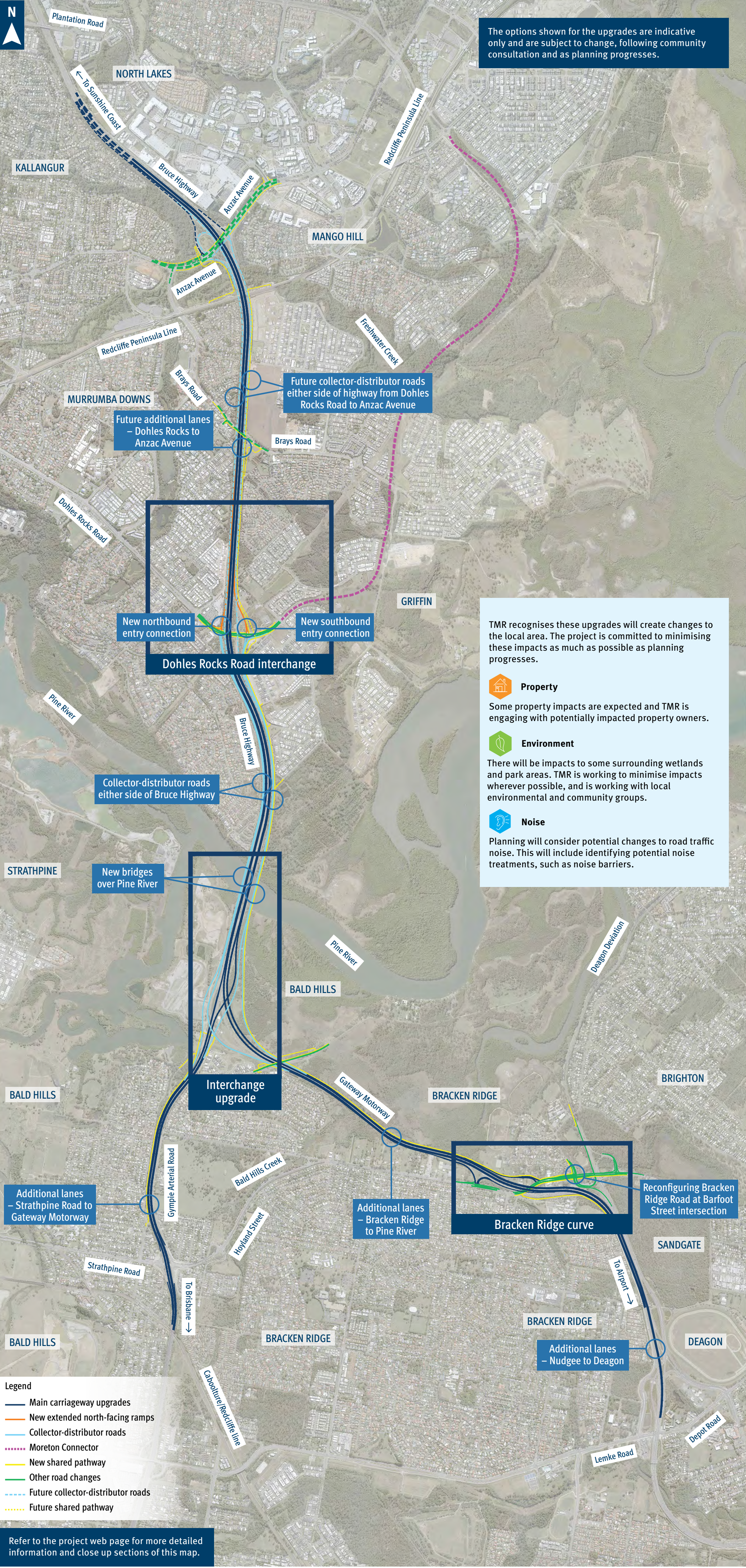
Australian Government



Queensland Government

Gateway Motorway and Bruce Highway Upgrades (GMBHU) project

North Brisbane to Moreton Bay Region



Bruce Highway – Dohles Rocks Road to Anzac Avenue

This business case is considering a staged approach to manage increasing traffic demands on the Bruce Highway between Dohles Rocks Road and Anzac Avenue:

First stage – Extended north-facing ramps

- Providing extended north-facing ramps (northbound entry and southbound exit ramps) from Dohles Rocks Road to Anzac Avenue along the Bruce Highway.
- The extended ramps provide an effective additional future lane on the Bruce Highway to the north.

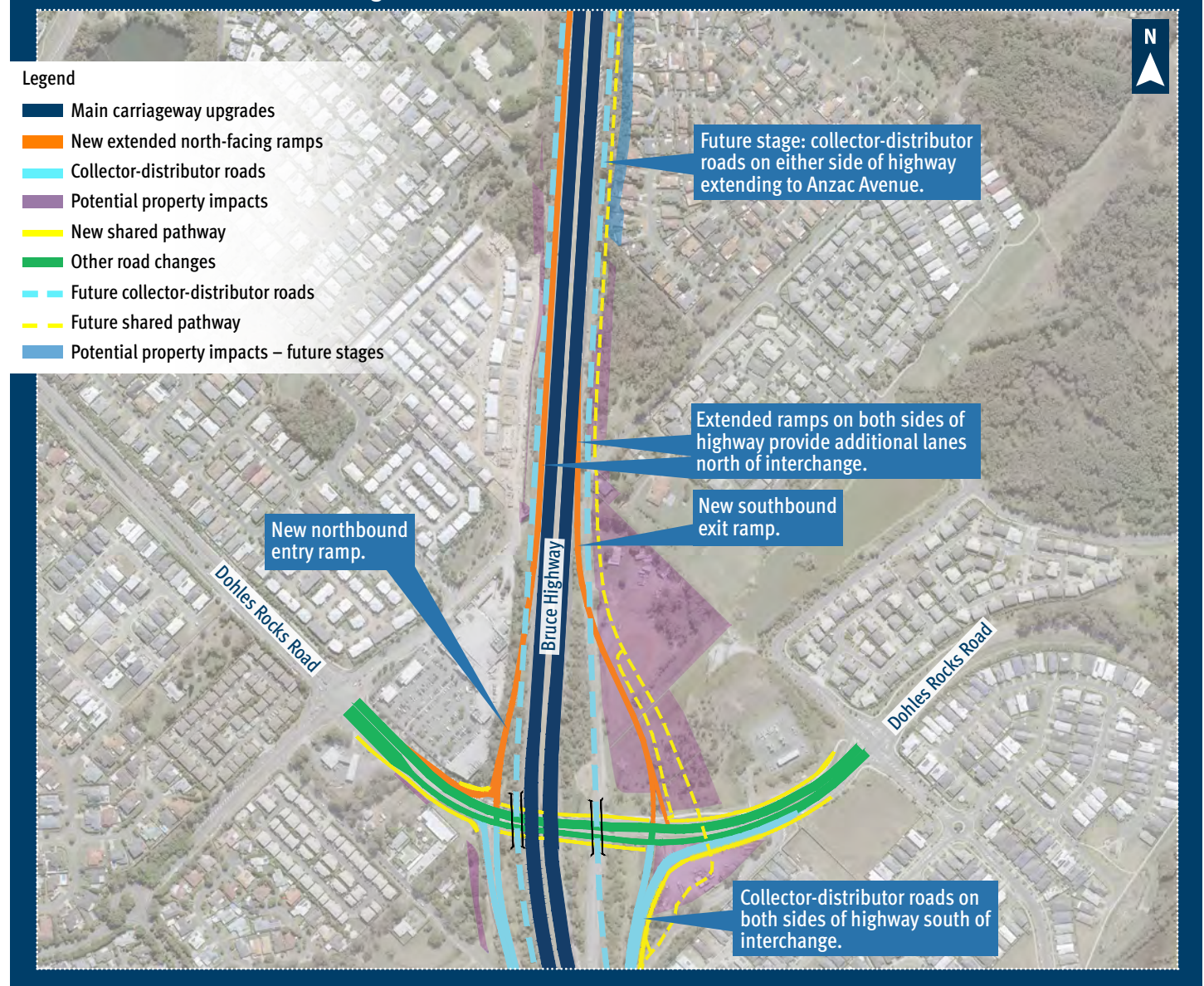
Timing: Finalising business case in late 2022. Construction to start 2024.

Future stages – Collector-distributor roads to Anzac Avenue

- Constructing collector-distributor roads on both sides of the Bruce Highway from Dohles Rocks Road to Anzac Avenue.
- Upgrades to the Anzac Avenue interchange to the Bruce Highway.
- A shared pedestrian and cycle path on the east side of the Bruce Highway from Dohles Rocks Road to Anzac Avenue.

Timing: Detailed design and construction timing is not confirmed and is subject to further approvals and funding.

Dohles Rocks Road interchange



The options shown for the upgrades are indicative only and are subject to change following community consultation and as planning progresses.

The Moreton Connector

The Moreton Connector, a proposed new road east of the Bruce Highway from Dohles Rocks Road to Anzac Avenue, will not progress to design and construction at this stage. The corridor will continue to be preserved by TMR and Moreton Bay Regional Council for future potential use.

Bruce Highway – Gateway Motorway to Dohles Rocks Road

This business case is considering upgrades to the Bruce Highway (Gateway Motorway to Dohles Rocks Road) to improve traffic flow and safety by providing:

- collector-distributor roads on both sides of the Bruce Highway between Gateway Motorway and Dohles Rocks Road
- new bridges over the Pine River to accommodate collector-distributor roads
- a major reconfiguration of Bruce Highway, Gateway Motorway and Gympie Arterial Road interchange
- additional lanes on Gympie Arterial Road from Strathpine Road to Gateway Motorway merge
- a shared pedestrian and cycle path adjacent to the highway, including across the Pine River.

Timing: Finalising business case in late 2023. Construction timing to be confirmed.

TMR is undertaking a separate project (\$5 million) to replace and improve noise barriers along a section of Gympie Arterial Road (between Strathpine Road and Gateway Motorway) in Bald Hills.

This project is being coordinated with the planning for the GMBHU project. The extent and location of these noise barrier replacements will be confirmed through the planning phase with construction expected to be completed in mid-2024.

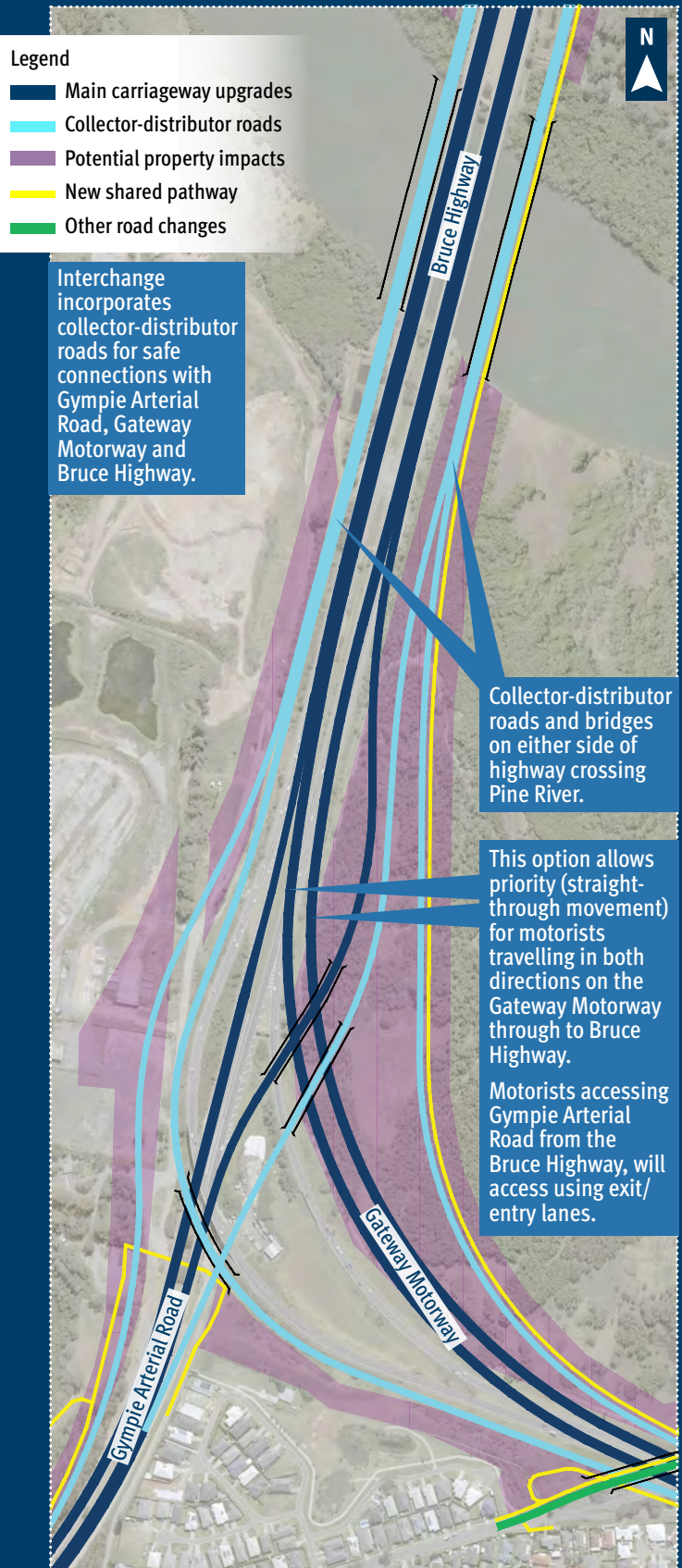
What are collector-distributor roads?

Collector-distributor roads are built parallel and separate to a main carriageway – collecting local traffic and distributing it to the road network. They enhance highway operation by providing extra road space and improve safety by reducing the need for vehicles to weave through highway traffic.

For the GMBHU project, collector-distributor roads will be provided on both sides of the Bruce Highway (Gateway Motorway to Dohles Rocks Road) and potentially up to Anzac Avenue, subject to further approvals and funding. Motorists can access them at the Gateway Motorway, Gympie Arterial Road and Dohles Rocks Road interchanges, to travel north and south as required.

Interchange upgrade – Bruce Highway, Gateway Motorway and Gympie Arterial Road

Gateway Motorway priority option



The options shown for the upgrades are indicative only and are subject to change, following community consultation and as planning progresses.

Gateway Motorway – Bracken Ridge to Pine River

This business case is considering upgrades to the Gateway Motorway (Bracken Ridge to Pine River) to improve traffic flow and safety by providing:

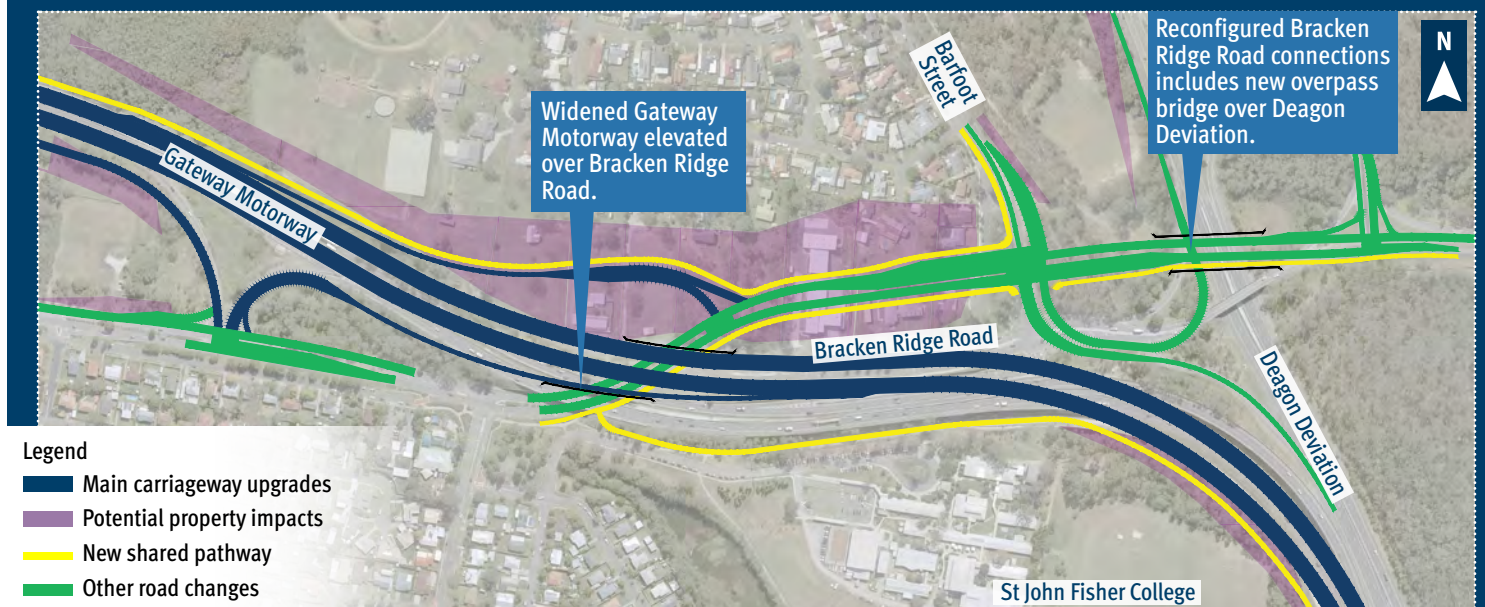
- additional motorway lanes
- improved connections to Bruce Highway, Bracken Ridge Road and Deagon Deviation including upgraded connections to Barfoot Street, Wyampa Road
- upgrades to the curve at Bracken Ridge
- shared pedestrian and cycle path on the northern side of the motorway.

Both the Bracken Ridge Fire and Rescue Station and Sandgate Ambulance Station will be impacted by upgrades to the Gateway Motorway at Bracken Ridge. These facilities provide a vital service to the local community, TMR is working closely with Queensland Fire and Emergency Services and Queensland Ambulance Service to reposition both stations to new locations in the local area. Both sites will remain operational until new facilities are up and running.

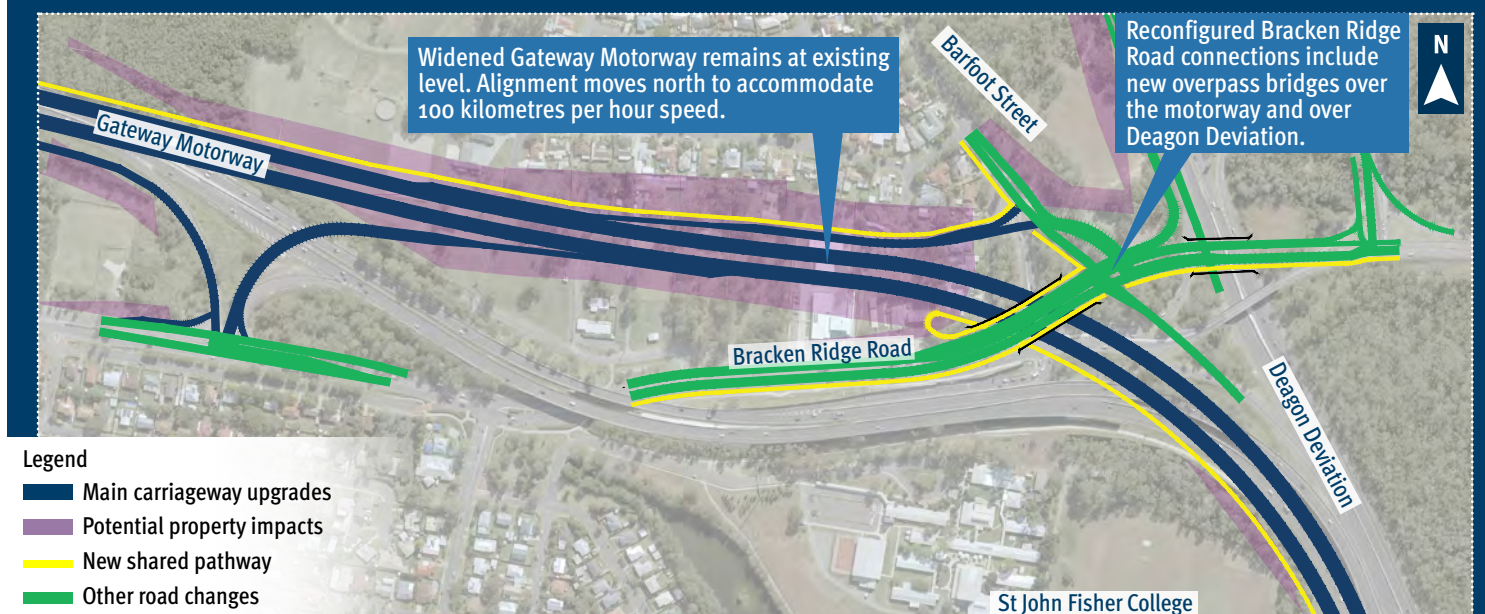
This business case also considers reconfiguring the Gateway Motorway from Nudgee to Deagon to provide eight lanes.

Timing: Finalising business case in late 2023. Construction timing to be confirmed.

Two options for Gateway Motorway (around the curve) at Bracken Ridge



90 kilometres per hour option for Gateway Motorway

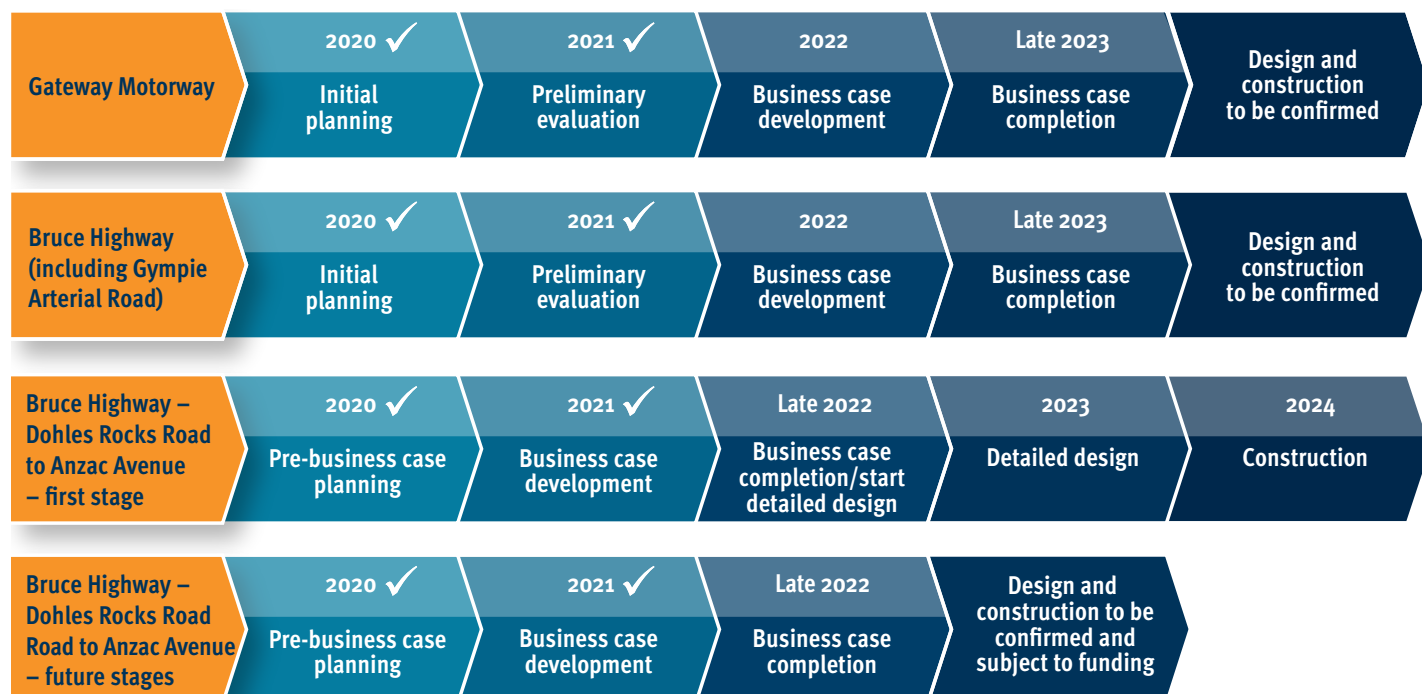


100 kilometres per hour option for Gateway Motorway

The options shown for the upgrades are indicative only and are subject to change, following community consultation and as planning progresses.



Timeline



TMR wants to know what you think about options being considered during the business case phase

Share your feedback online (use QR code to visit our webpage) or chat with the project team at the following community drop-in sessions:

Session 1:

Saturday 12 November 2022
9am – 12pm
John Oxley Reserve,
Ogg Road,
Murrumba Downs

Session 2:

Monday 14 November 2022
4–7pm
Bald Hills Scout Hall,
508 Bracken Ridge Road,
Bald Hills

Session 3:

Saturday 19 November 2022
9am – 12pm
Sandgate Scout Hall,
134 Brighton Road,
Sandgate

Session 4:

Tuesday 22 November 2022
4–7pm
North Lakes Community
Centre Meeting Room 1,
Level 2, 10 The Corso,
North Lakes

Contact us

The project team is available to answer questions and record your feedback.

Phone: **1800 607 755*** (Monday to Friday, 9am – 5pm)

Email: **GMBHU@tmr.qld.gov.au**

Web: **tmr.qld.gov.au** and search for 'Gateway Motorway and Bruce Highway Upgrades'

Post: **GMBHU Project Team, TMR Metropolitan Region, PO Box 70, Spring Hill, Brisbane 4004**



* Free call from anywhere in Australia, call charges apply for mobile phones and payphones. Check with your service provider for call costs.