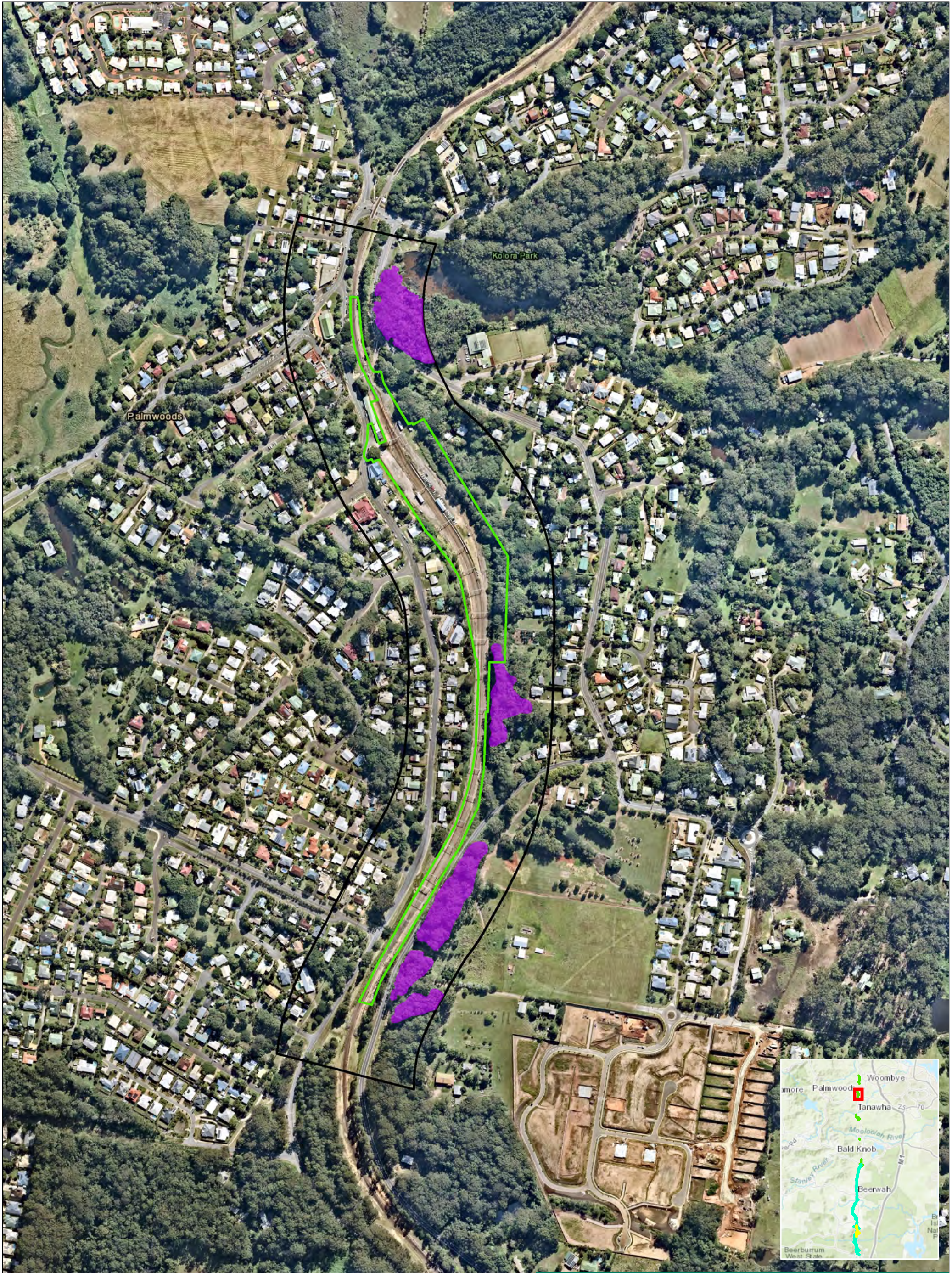


## **Appendix D.3      Koala and Grey-headed Flying-fox Habitat within the Disturbance Footprint**





Legend

- EPBC Stage 2 Boundary
- Koala and Grey-headed Flying Fox Habitat
- Assessment Boundary

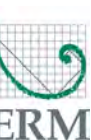
Data Source:  
ESRI World Topographic Map, Nearmap 19th May 2021

### Koala and Grey-headed Flying-fox Habitat within the Disturbance Footprint

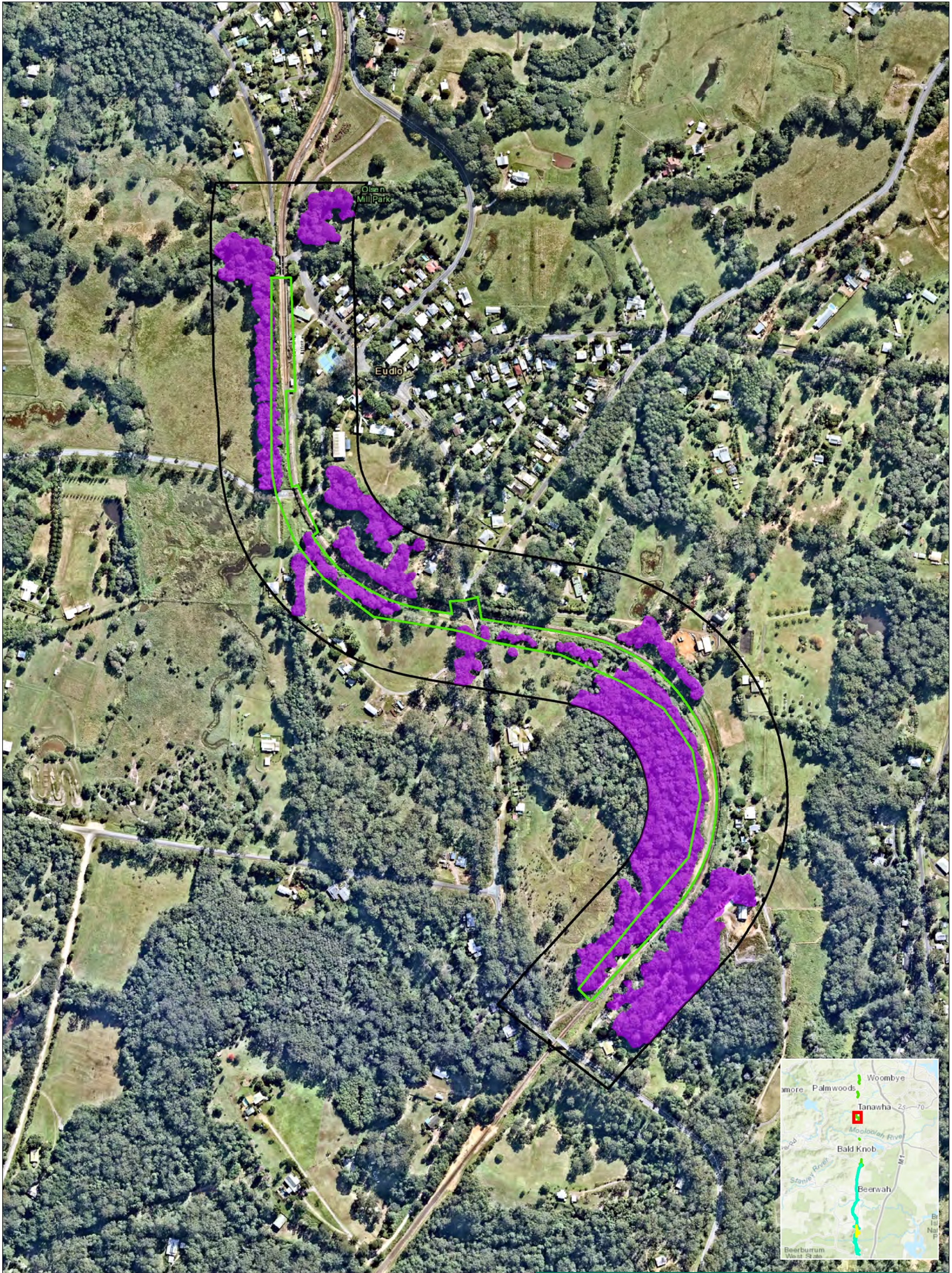
Drawing No: 0589458s_B2NBio_G003_R6.mxd	Beerburum to Nambour Rail Upgrade
Date: 22/07/2021	Drawing Size: A4
Drawn By: VN	Reviewed By: EW
Client: Qld Department of Transport and Main Roads	
Coordinate System: GDA2020 MGA Zone 56	
0 50 100 150m	

This figure may be based on third party data or data which has not been verified by ERM and it may not be to scale. Unless expressly agreed otherwise, this figure is intended as a guide only and ERM does not warrant its accuracy.

F3-1







Legend

- EPBC Stage 2 Boundary
- Koala and Grey-headed Flying Fox Habitat
- Assessment Boundary

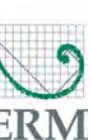
Data Source:  
ESRI World Topographic Map, Nearmap 19th May 2021

### Koala and Grey-headed Flying-fox Habitat within the Disturbance Footprint

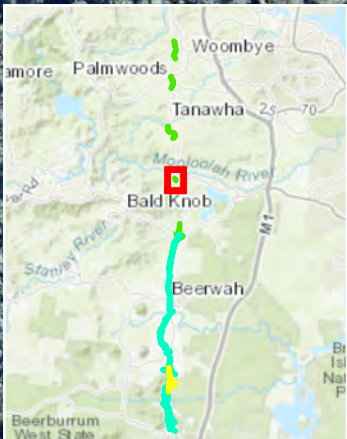
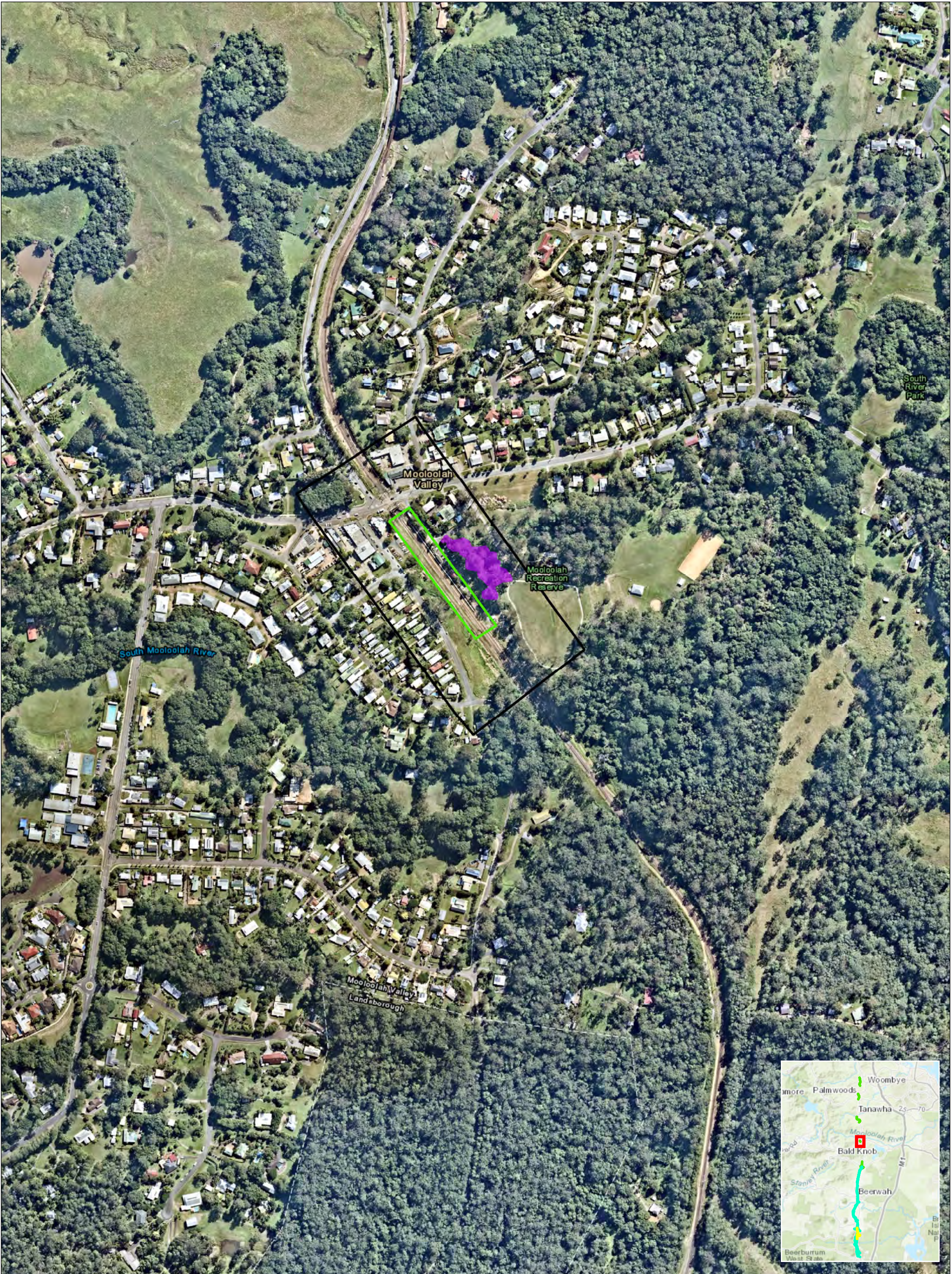
Drawing No: 0589458s_B2NBio_G003_R6.mxd	Beerburum to Nambour Rail Upgrade
Date: 22/07/2021	Drawing Size: A4
Drawn By: VN	Reviewed By: EW
Client: Qld Department of Transport and Main Roads	
Coordinate System: GDA2020 MGA Zone 56	
0 50 100 150m	

This figure may be based on third party data or data which has not been verified by ERM and it may not be to scale. Unless expressly agreed otherwise, this figure is intended as a guide only and ERM does not warrant its accuracy.

F3-2







Legend

- EPBC Stage 2 Boundary
- Koala and Grey-headed Flying Fox Habitat
- Assessment Boundary

Data Source:  
ESRI World Topographic Map, Nearmap 19th May 2021

**Koala and Grey-headed Flying-fox Habitat within the Disturbance Footprint**

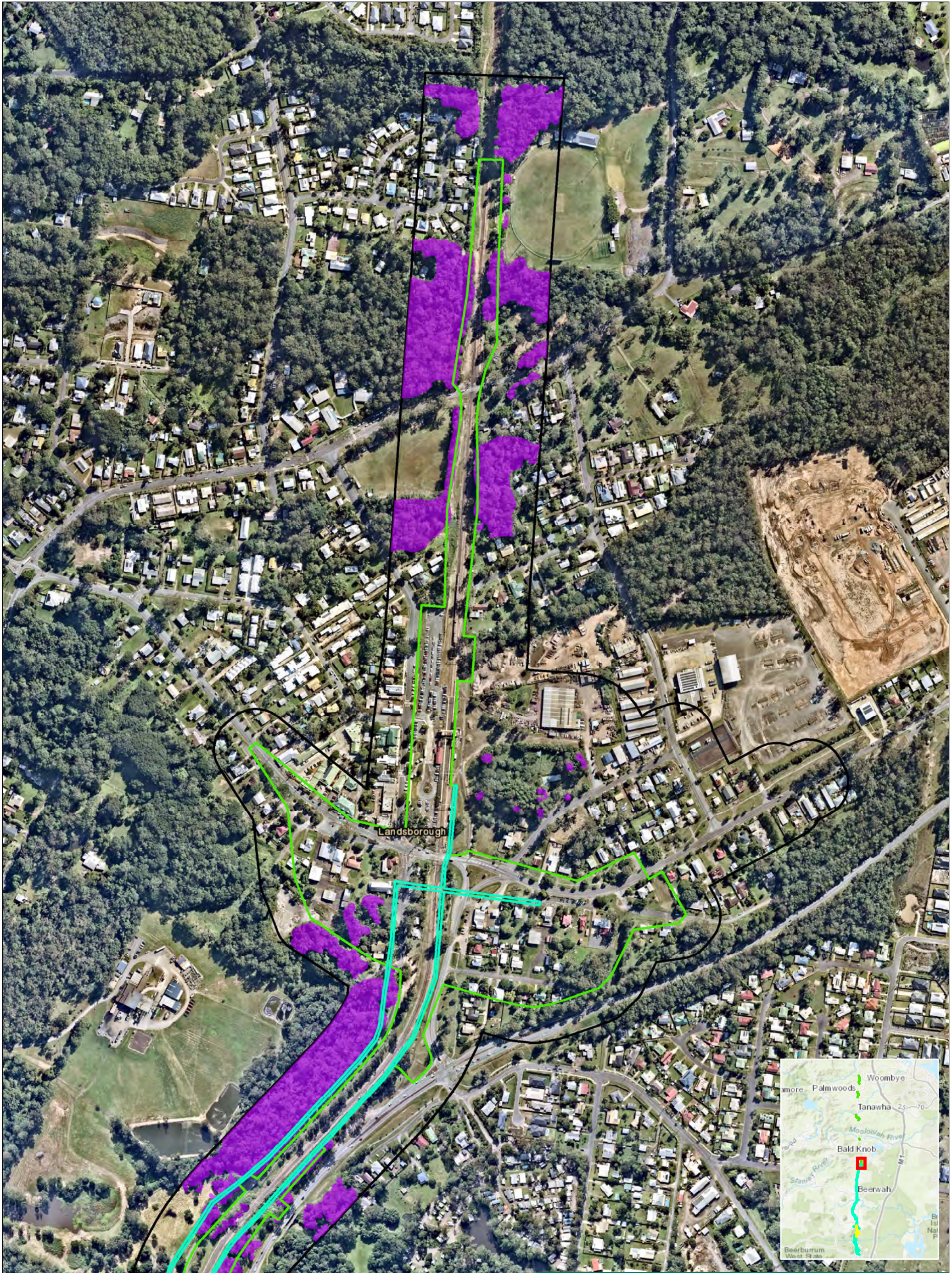
Drawing No: 0589458s_B2NBio_G003_R6.mxd	Beerburum to Nambour Rail Upgrade
Date: 22/07/2021	Drawing Size: A4
Drawn By: VN	Reviewed By: EW
Client: Qld Department of Transport and Main Roads	
Coordinate System: GDA2020 MGA Zone 56	
0 50 100 150m	

This figure may be based on third party data or data which has not been verified by ERM and it may not be to scale. Unless expressly agreed otherwise, this figure is intended as a guide only and ERM does not warrant its accuracy.

F3-3







Legend

- EPBC Stage 1 Main Works Boundary
- EPBC Stage 2 Boundary
- Koala and Grey Headed Flying Fox Habitat
- Assessment Boundary

Data Source:  
ESRI World Topographic Map, Nearmap 19th May 2021

### Koala and Grey-headed Flying-fox Habitat within the Disturbance Footprint

Drawing No: 0589458s_B2NBio_G003_R6.mxd	Beerburum to Nambour Rail Upgrade
Date: 22/07/2021	Drawing Size: A4
Drawn By: VN	Reviewed By: EW
Client: Qld Department of Transport and Main Roads	

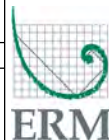
Coordinate System: GDA2020 MGA Zone 56

0 50 100 150m

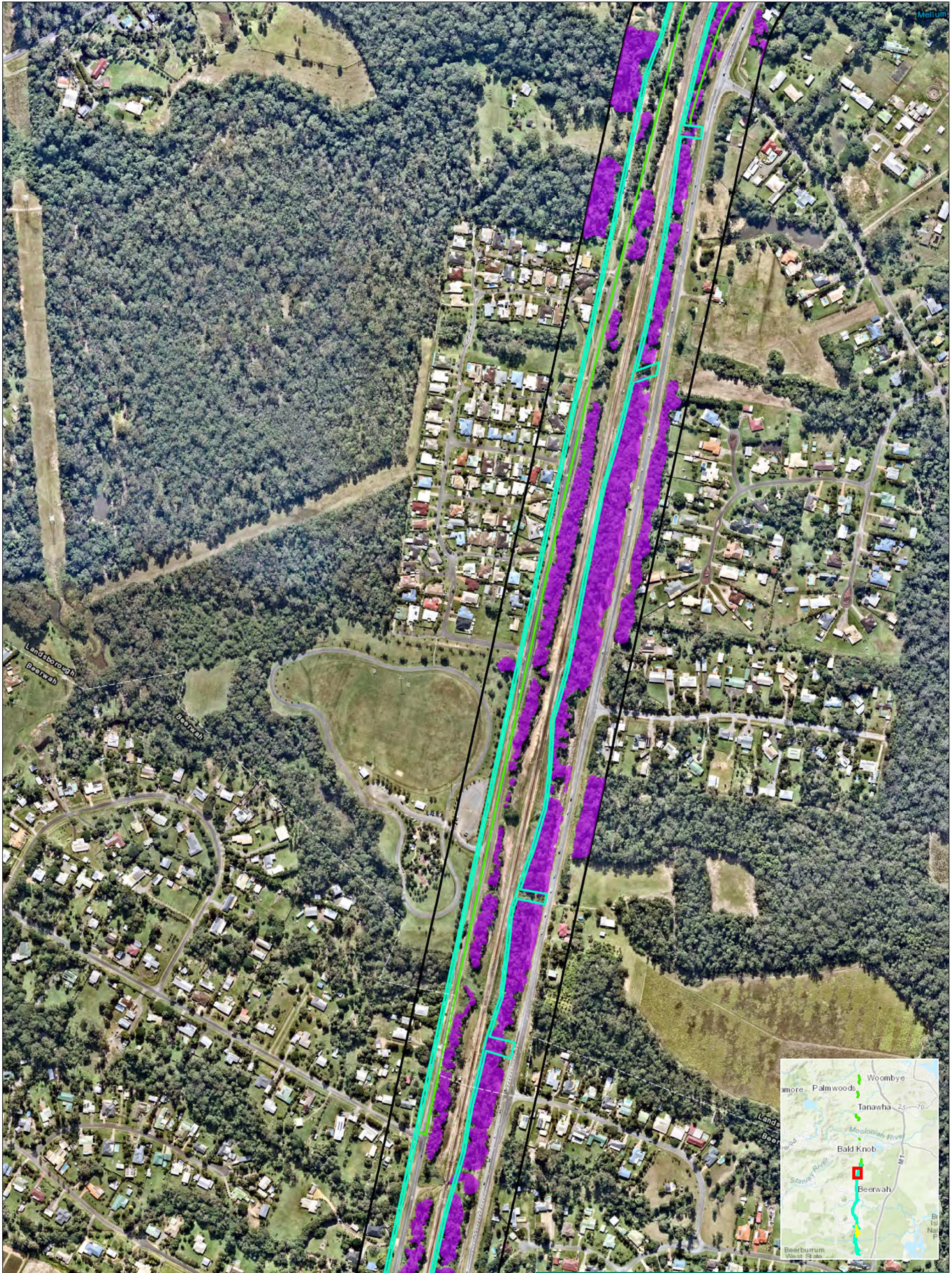
N

This figure may be based on third party data or data which has not been verified by ERM and it may not be to scale. Unless expressly agreed otherwise, this figure is intended as a guide only and ERM does not warrant its accuracy.

F3-4







Legend

- EPBC Stage 1 Main Works Boundary
- EPBC Stage 2 Boundary
- Koala and Grey-headed Flying Fox Habitat
- Assessment Boundary

Data Source:  
ESRI World Topographic Map, Nearmap 19th May 2021

**Koala and Grey-headed Flying-fox Habitat within the Disturbance Footprint**

Drawing No: 0589458s_B2NBio_G003_R6.mxd	Beerburum to Nambour Rail Upgrade
Date: 22/07/2021	Drawing Size: A4
Drawn By: VN	Reviewed By: EW
Client: Qld Department of Transport and Main Roads	

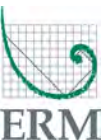
Coordinate System: GDA2020 MGA Zone 56

0 50 100 150m

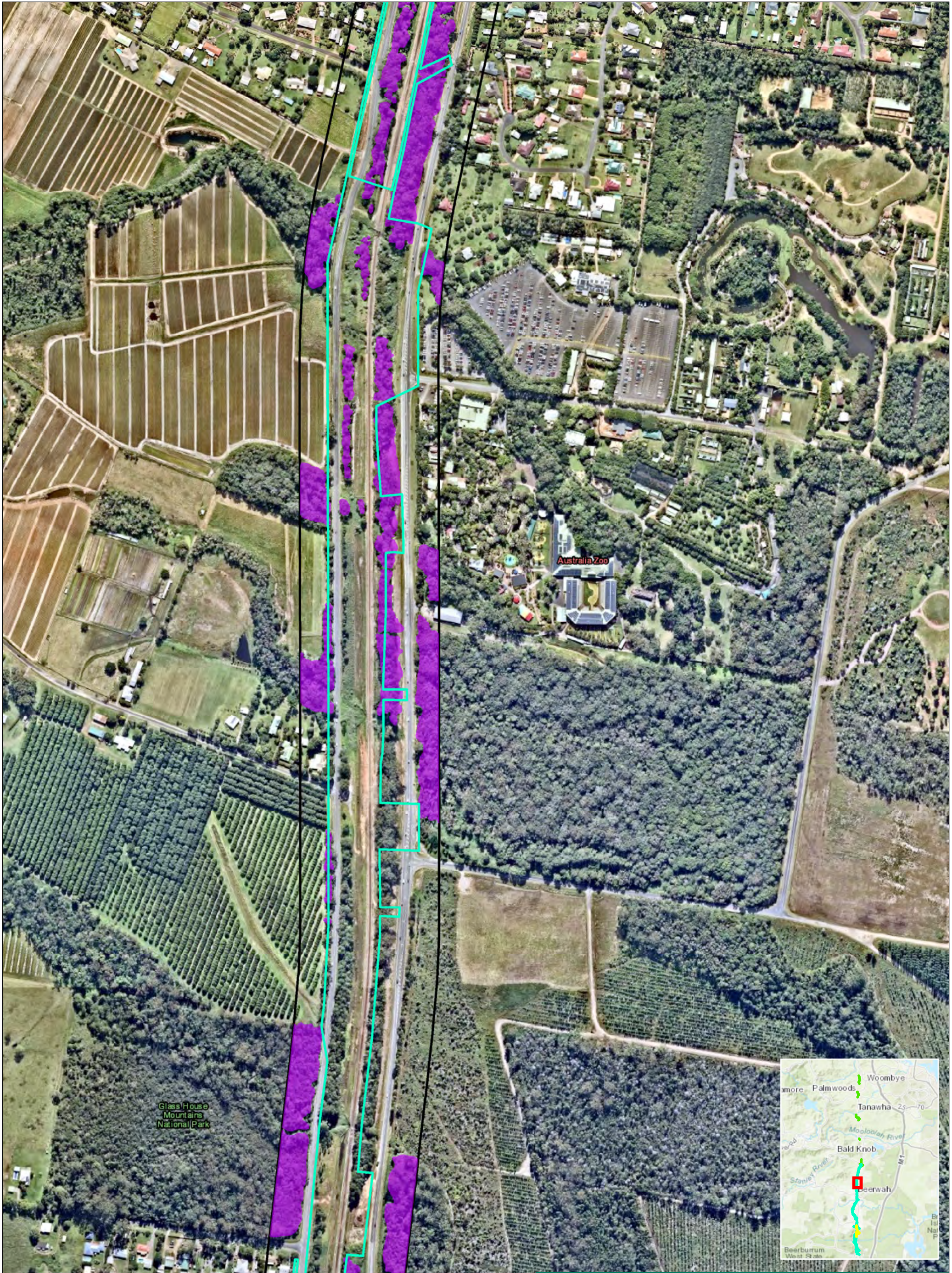
N

This figure may be based on third party data or data which has not been verified by ERM and it may not be to scale. Unless expressly agreed otherwise, this figure is intended as a guide only and ERM does not warrant its accuracy.

F3-5







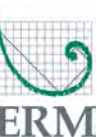
Legend

- EPBC Stage 1 Main Works Boundary
- EPBC Stage 2 Boundary
- Koala and Grey-headed Flying Fox Habitat
- Assessment Boundary

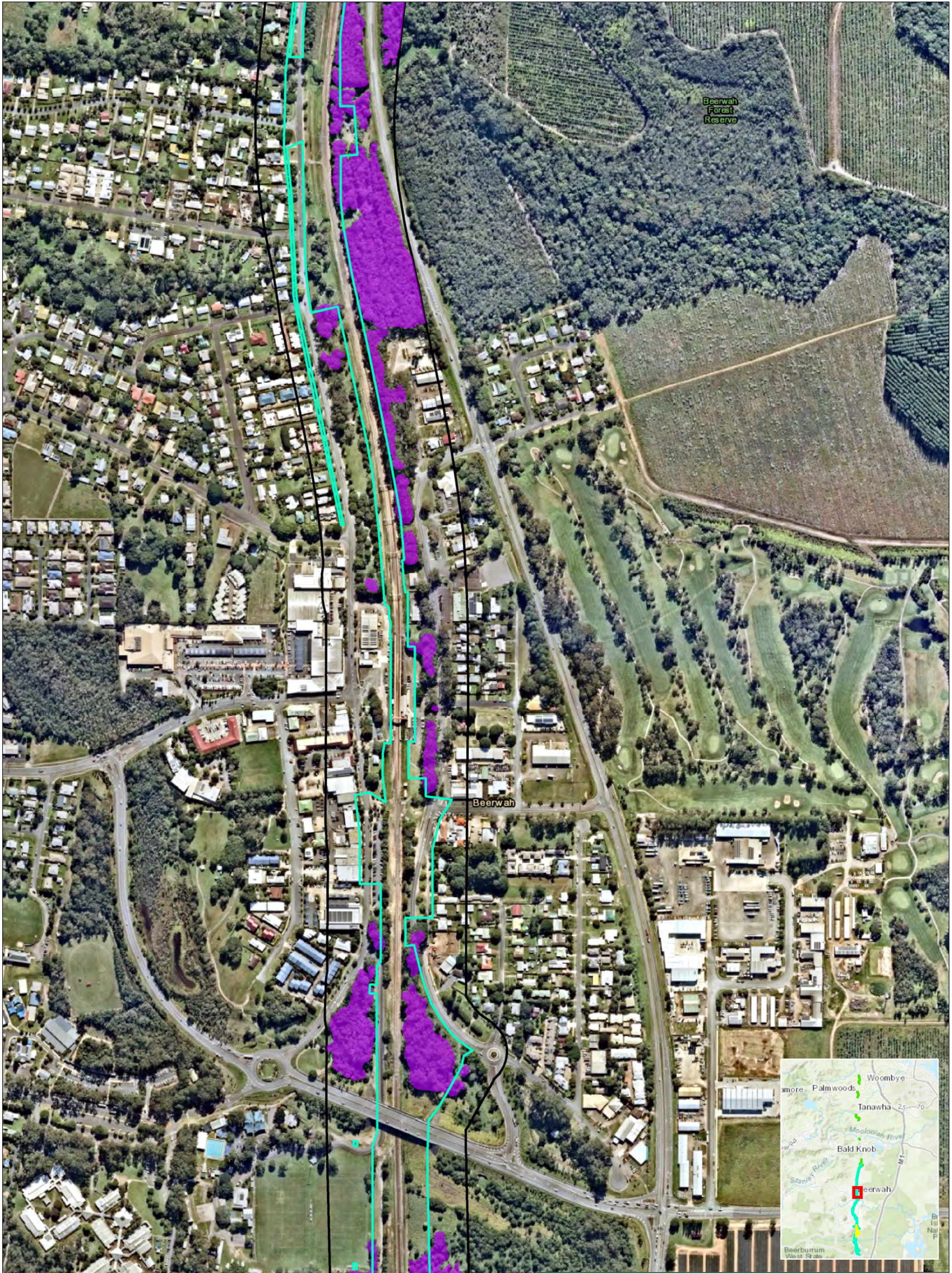
Data Source:  
ESRI World Topographic Map, Nearmap 19th May 2021

**Koala and Grey-headed Flying-fox Habitat within the Disturbance Footprint**

Drawing No: 0589458s_B2NBio_G003_R6.mxd	Beerburum to Nambour Rail Upgrade
Date: 22/07/2021	Drawing Size: A4
Drawn By: VN	Reviewed By: EW
Client: Qld Department of Transport and Main Roads	
Coordinate System: GDA2020 MGA Zone 56	This figure may be based on third party data or data which has not been verified by ERM and it may not be to scale. Unless expressly agreed otherwise, this figure is intended as a guide only and ERM does not warrant its accuracy.
0 50 100 150m	







Legend

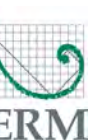
- EPBC Stage 1 Main Works Boundary
- Koala and Grey Headed Flying Fox Habitat
- Assessment Boundary

Data Source:  
ESRI World Topographic Map, Nearmap 19th May 2021

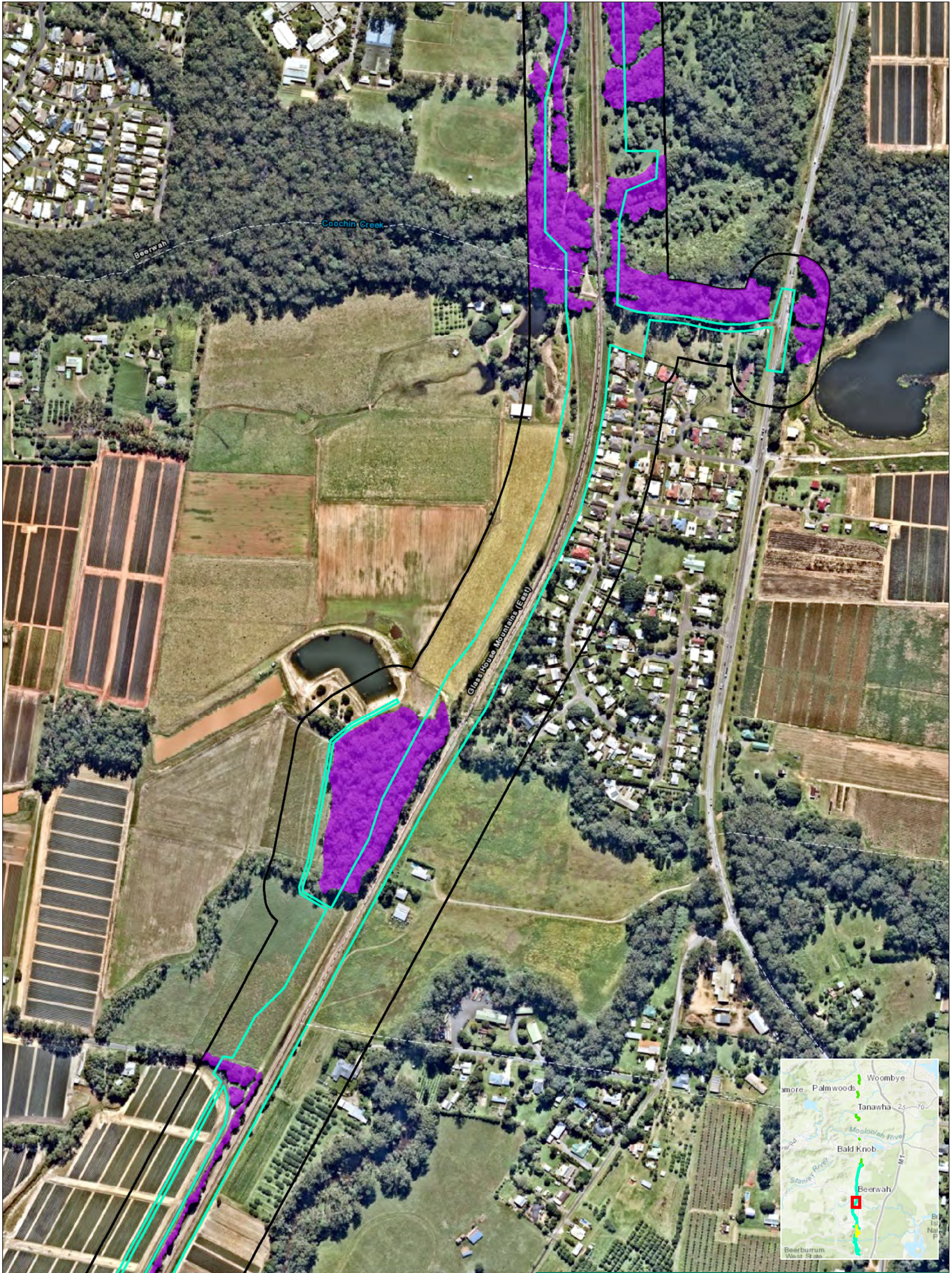
**Koala and Grey-headed Flying-fox Habitat within the Disturbance Footprint**

Drawing No: 0589458s_B2NBio_G003_R6.mxd	Beerburum to Nambour Rail Upgrade
Date: 22/07/2021	Drawing Size: A4
Drawn By: VN	Reviewed By: EW
Client: Qld Department of Transport and Main Roads	
Coordinate System: GDA2020 MGA Zone 56	This figure may be based on third party data or data which has not been verified by ERM and it may not be to scale. Unless expressly agreed otherwise, this figure is intended as a guide only and ERM does not warrant its accuracy.
0 50 100 150m	

F3-7







Legend

- EPBC Stage 1 Main Works Boundary
- Koala and Grey-headed Flying Fox Habitat
- Assessment Boundary

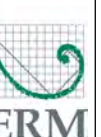
Data Source:  
ESRI World Topographic Map, Nearmap 19th May 2021

### Koala and Grey-headed Flying-fox Habitat within the Disturbance Footprint

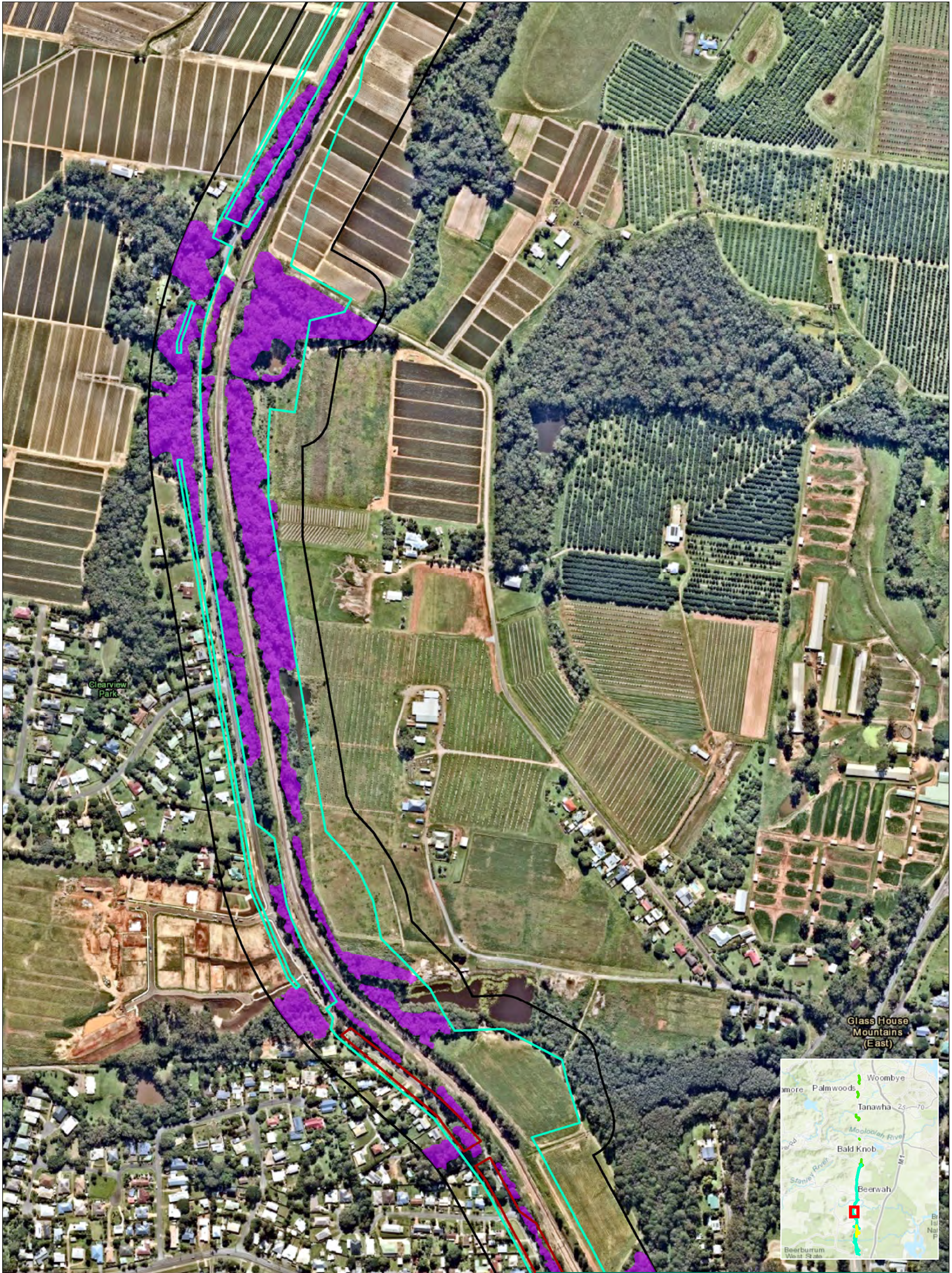
Drawing No: 0589458s_B2NBio_G003_R6.mxd	Beerburum to Nambour Rail Upgrade
Date: 22/07/2021	Drawing Size: A4
Drawn By: VN	Reviewed By: EW
Client: Qld Department of Transport and Main Roads	
Coordinate System: GDA2020 MGA Zone 56	This figure may be based on third party data or data which has not been verified by ERM and it may not be to scale. Unless expressly agreed otherwise, this figure is intended as a guide only and ERM does not warrant its accuracy.
0 50 100 150m	



F3-8







Legend

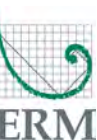
- EPBC Stage 1 Main Works Boundary
- No GO Area
- Koala and Grey-headed Flying Fox Habitat
- Assessment Boundary

Data Source:  
ESRI World Topographic Map, Nearmap 19th May 2021

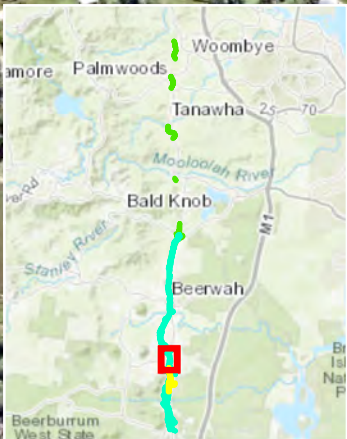
**Koala and Grey-headed Flying-fox Habitat within the Disturbance Footprint**

Drawing No: 0589458s_B2NBio_G003_R6.mxd	Beerburrum to Nambour Rail Upgrade
Date: 22/07/2021	Drawing Size: A4
Drawn By: VN	Reviewed By: EW
Client: Qld Department of Transport and Main Roads	
Coordinate System: GDA2020 MGA Zone 56	This figure may be based on third party data or data which has not been verified by ERM and it may not be to scale. Unless expressly agreed otherwise, this figure is intended as a guide only and ERM does not warrant its accuracy.
0 50 100 150m	



F3-9



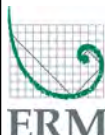




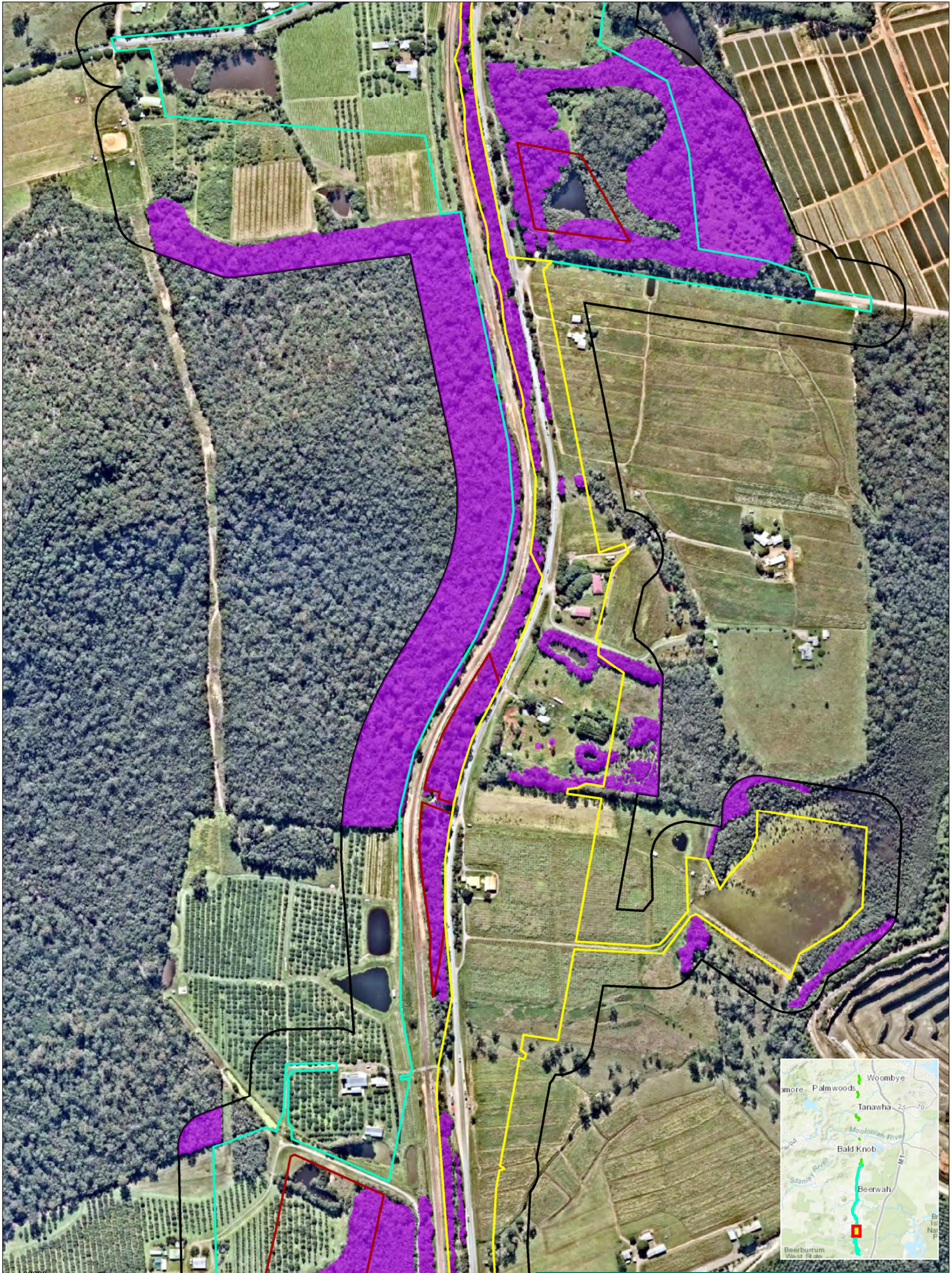
## Koala and Grey-headed Flying-fox Habitat within the Disturbance Footprint

Drawing No: 0589458s_B2NBio_G003_R6.mxd		Beerburrum to Nambour Rail Upgrade	
Date: 22/07/2021	Drawing Size: A4		
Drawn By: VN	Reviewed By: EW	Client: Qld Department of Transport and Main Roads	
Coordinate System: GDA2020 MGA Zone 56		<p>This figure may be based on third party data or data which has not been verified by ERM and it may not be to scale. Unless expressly agreed otherwise, this figure is intended as a guide only and ERM does not warrant its accuracy.</p>	
		<p>N</p> 	

F3-10







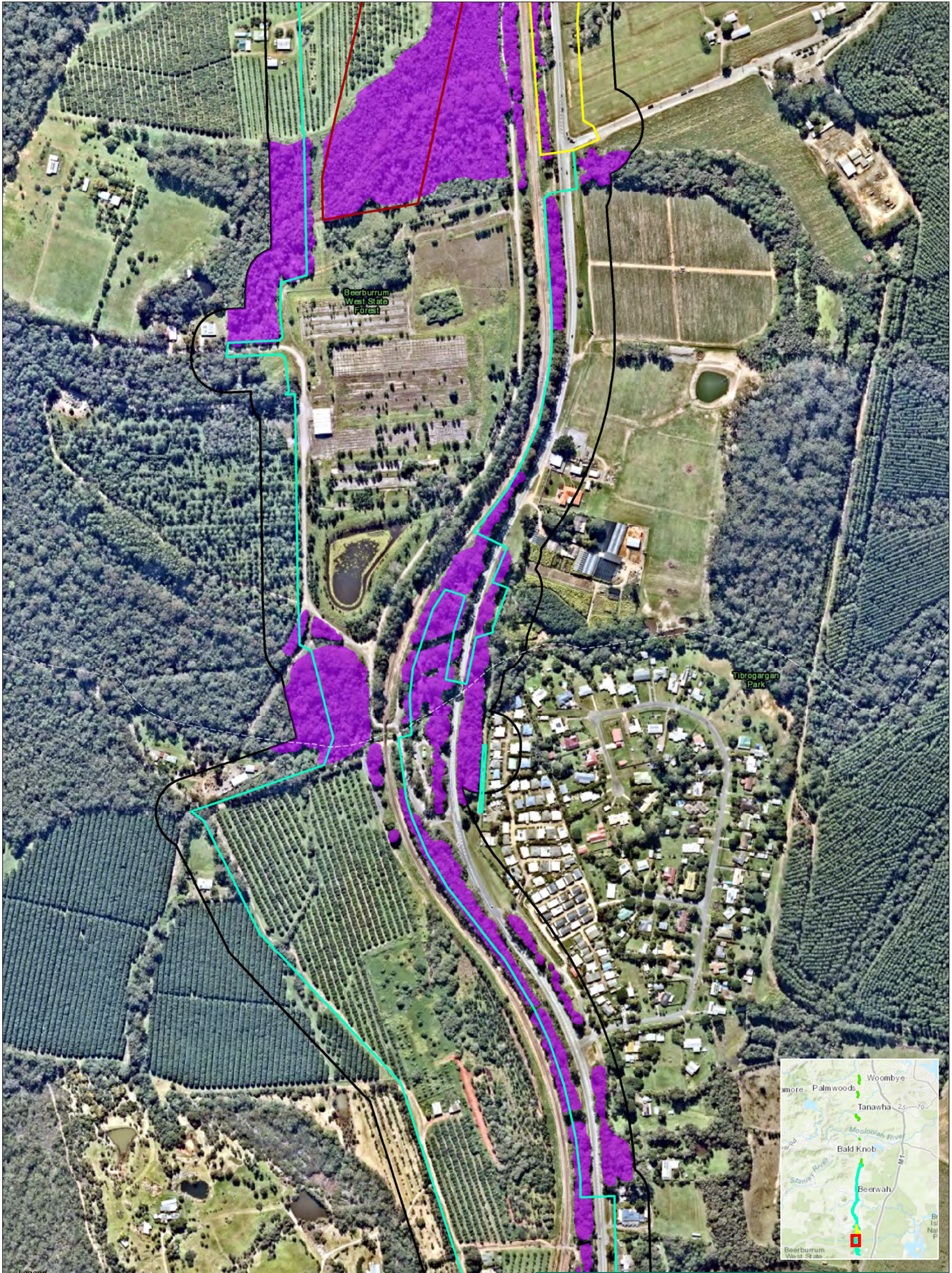
**Legend**

- EPBC Early Works Boundary
- EPBC Stage 1 Main Works Boundary
- No GO Area
- Koala and Grey Headed Flying Fox Habitat
- Assessment Boundary

Data Source:  
ESRI World Topographic Map, Nearmap 19th May 2021

<b>Koala and Grey-headed Flying-fox Habitat within the Disturbance Footprint</b>		<b>F3-11</b>
Drawing No: 0589458s_B2NBio_G003_R6.mxd		Beerburrum to Nambour Rail Upgrade
Date: 22/07/2021	Drawing Size: A4	Client: Qld Department of Transport and Main Roads
Drawn By: VN	Reviewed By: EW	
Coordinate System: GDA2020 MGA Zone 56		This figure may be based on third party data or data which has not been verified by ERM and it may not be to scale. Unless expressly agreed otherwise, this figure is intended as a guide only and ERM does not warrant its accuracy.
0 50 100 150m		





Legend

- EPBC Early Works Boundary
- EPBC Stage 1 Main Works Boundary
- No GO Area
- Koala and Grey-headed Flying Fox Habitat
- Assessment Boundary

Data Source:  
ESRI World Topographic Map, Nearmap 19th May 2021

### Koala and Grey-headed Flying-fox Habitat within the Disturbance Footprint

Drawing No: 0589458s_B2NBio_G003_R6.mxd	Beerburum to Nambour Rail Upgrade
Date: 22/07/2021	Drawing Size: A4
Drawn By: VN	Reviewed By: EW
Client: Qld Department of Transport and Main Roads	

Coordinate System: GDA2020 MGA Zone 56

0 50 100 150m

N

This figure may be based on third party data or data which has not been verified by ERM and it may not be to scale. Unless expressly agreed otherwise, this figure is intended as a guide only and ERM does not warrant its accuracy.

F3-12

